

## Cystatin L1 rabbit pAb

**Cat#: orb767616 (Manual)**

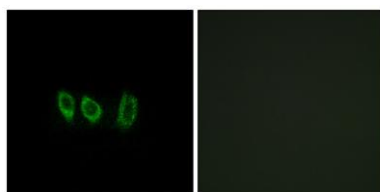
For research use only. Not intended for diagnostic use.

<b>Product Name</b>	Cystatin L1 rabbit pAb
<b>Host species</b>	Rabbit
<b>Applications</b>	IF;ELISA
<b>Species Cross-Reactivity</b>	Human;Rat;Mouse;
<b>Recommended dilutions</b>	Immunofluorescence: 1/200 - 1/1000. ELISA: 1/40000. Not yet tested in other applications.
<b>Immunogen</b>	The antiserum was produced against synthesized peptide derived from human CSTL1. AA range:61-110
<b>Specificity</b>	Cystatin L1 Polyclonal Antibody detects endogenous levels of Cystatin L1 protein.
<b>Formulation</b>	Liquid in PBS containing 50% glycerol, 0.5% BSA and 0.02% sodium azide..
<b>Storage</b>	Store at -20°C. Avoid repeated freeze-thaw cycles.
<b>Protein Name</b>	Cystatin-like 1
<b>Gene Name</b>	CSTL1
<b>Cellular localization</b>	Secreted .
<b>Purification</b>	The antibody was affinity-purified from rabbit antiserum by affinity-chromatography using epitope-specific immunogen.
<b>Clonality</b>	Polyclonal

<b>Concentration</b>	1 mg/ml
<b>Observed band</b>	
<b>Human Gene ID</b>	128817
<b>Human Swiss-Prot Number</b>	Q9H114
<b>Alternative Names</b>	CSTL1; Cystatin-like 1; RCET11

## Background

The cystatin superfamily encompasses proteins that contain multiple cystatin-like sequences. Some of the members are active cysteine protease inhibitors, while others have lost or perhaps never acquired this inhibitory activity. There are three inhibitory families in the superfamily, including the type 1 cystatins (stefins), type 2 cystatins and the kininogens. The type 2 cystatin proteins are a class of cysteine proteinase inhibitors found in a variety of human fluids and secretions. The cystatin locus on chromosome 20 contains the majority of the type 2 cystatin genes and pseudogenes. This gene is located at the telomeric end of the cystatin locus and encodes a type 2 cystatin-like protein. The specific function of this protein has not been determined. [provided by RefSeq, Jul 2008],



**Immunofluorescence analysis of A549 cells, using CSTL1 Antibody. The picture on the right is blocked with the synthesized peptide.**