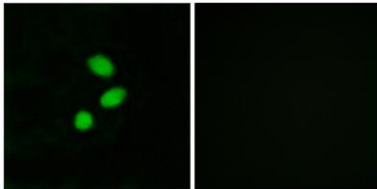


TSHZ2 rabbit pAb**Cat#: orb767613 (Manual)**

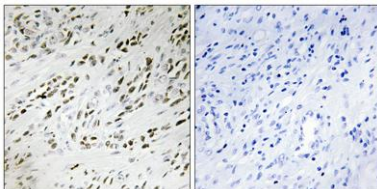
For research use only. Not intended for diagnostic use.

Product Name	TSHZ2 rabbit pAb
Host species	Rabbit
Applications	IHC;IF;ELISA
Species Cross-Reactivity	Human;Mouse
Recommended dilutions	Immunohistochemistry: 1/100 - 1/300. Immunofluorescence: 1/200 - 1/1000. ELISA: 1/20000. Not yet tested in other applications.
Immunogen	The antiserum was produced against synthesized peptide derived from human TSH2. AA range:811-860
Specificity	TSHZ2 Polyclonal Antibody detects endogenous levels of TSHZ2 protein.
Formulation	Liquid in PBS containing 50% glycerol, 0.5% BSA and 0.02% sodium azide..
Storage	Store at -20°C. Avoid repeated freeze-thaw cycles.
Protein Name	Teashirt homolog 2
Gene Name	TSHZ2
Cellular localization	Nucleus .
Purification	The antibody was affinity-purified from rabbit antiserum by affinity-chromatography using epitope-specific immunogen.
Clonality	Polyclonal

Concentration	1 mg/ml
Observed band	
Human Gene ID	128553
Human Swiss-Prot Number	Q9NRE2
Alternative Names	TSHZ2; C20orf17; TSH2; ZNF218; Teashirt homolog 2; Ovarian cancer-related protein 10-2; OVC10-2; Zinc finger protein 218
Background	function:Transcriptional regulator involved in developmental processes .,PTM:Sumoylated.,sequence caution:The sequence differs from that shown due translation of a 3'-UTR region.,similarity:Belongs to the teashirt C2H2-type zinc-finger protein family.,similarity:Contains 1 homeobox DNA-binding domain.,similarity:Contains 5 C2H2-type zinc fingers.,



Immunofluorescence analysis of MCF7 cells, using TSH2 Antibody. The picture on the right is blocked with the synthesized peptide.



Immunohistochemistry analysis of paraffin-embedded human prostate carcinoma tissue, using TSH2 Antibody. The picture on the right is blocked with the synthesized peptide.