

COL4A2 rabbit pAb**Cat#: orb767611 (Manual)**

For research use only. Not intended for diagnostic use.

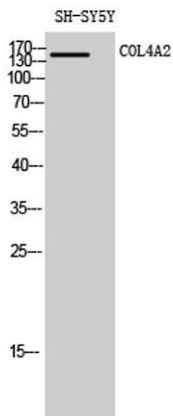
| | |
|---------------------------------|--|
| Product Name | COL4A2 rabbit pAb |
| Host species | Rabbit |
| Applications | WB;IHC;IF;ELISA |
| Species Cross-Reactivity | Human;Mouse |
| Recommended dilutions | Western Blot: 1/500 - 1/2000. Immunohistochemistry: 1/100 - 1/300. Immunofluorescence: 1/200 - 1/1000. ELISA: 1/20000. Not yet tested in other applications. |
| Immunogen | The antiserum was produced against synthesized peptide derived from human Collagen IV alpha2. AA range:151-200 |
| Specificity | COL4A2 Polyclonal Antibody detects endogenous levels of COL4A2 protein. |
| Formulation | Liquid in PBS containing 50% glycerol, 0.5% BSA and 0.02% sodium azide.. |
| Storage | Store at -20°C. Avoid repeated freeze-thaw cycles. |
| Protein Name | Collagen alpha-2(IV) chain |
| Gene Name | COL4A2 |
| Cellular localization | Secreted, extracellular space, extracellular matrix, basement membrane. |
| Purification | The antibody was affinity-purified from rabbit antiserum by affinity-chromatography using epitope-specific immunogen. |
| Clonality | Polyclonal |

Explore. Bioreagents.

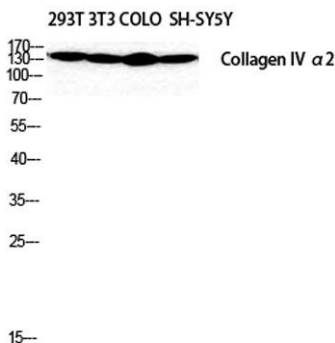
| | |
|--------------------------------|------------------------------------|
| Concentration | 1 mg/ml |
| Observed band | 150kD |
| Human Gene ID | 1284 |
| Human Swiss-Prot Number | P08572 |
| Alternative Names | COL4A2; Collagen alpha-2(IV) chain |

Background

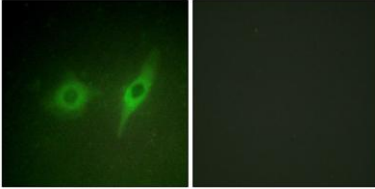
This gene encodes one of the six subunits of type IV collagen, the major structural component of basement membranes. The C-terminal portion of the protein, known as canstatin, is an inhibitor of angiogenesis and tumor growth. Like the other members of the type IV collagen gene family, this gene is organized in a head-to-head conformation with another type IV collagen gene so that each gene pair shares a common promoter. [provided by RefSeq, Jul 2008],



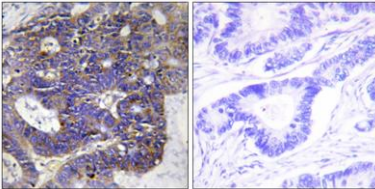
Western Blot analysis of SH-SY5Y cells using COL4A2 Polyclonal Antibody diluted at 1:2000



Western Blot analysis of SH-SY5Y 293T NIH-3T3 COLO cells using COL4A2 Polyclonal Antibody diluted at 1:2000



Immunofluorescence analysis of HeLa cells, using Collagen IV alpha2 Antibody. The picture on the right is blocked with the synthesized peptide.



Immunohistochemistry analysis of paraffin-embedded human colon carcinoma tissue, using Collagen IV alpha2 Antibody. The picture on the right is blocked with the synthesized peptide.