

Podocan rabbit pAb**Cat#: orb767603 (Manual)**

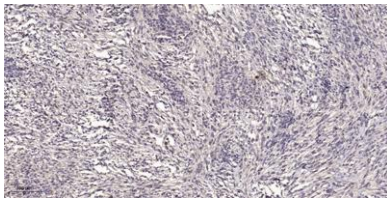
For research use only. Not intended for diagnostic use.

Product Name	Podocan rabbit pAb
Host species	Rabbit
Applications	IHC;IF;ELISA
Species Cross-Reactivity	Human;Rat;Mouse;
Recommended dilutions	Immunohistochemistry: 1/100 - 1/300. ELISA: 1/40000. Not yet tested in other applications.
Immunogen	Synthesized peptide derived from the C-terminal region of human Podocan.
Specificity	Podocan Polyclonal Antibody detects endogenous levels of Podocan protein.
Formulation	Liquid in PBS containing 50% glycerol, 0.5% BSA and 0.02% sodium azide..
Storage	Store at -20°C. Avoid repeated freeze-thaw cycles.
Protein Name	Podocan
Gene Name	PODN
Cellular localization	[Isoform 1]: Secreted, extracellular space, extracellular matrix.; [Isoform 2]: Cytoplasm .; [Isoform 3]: Cytoplasm .; [Isoform 4]: Cytoplasm .
Purification	The antibody was affinity-purified from rabbit antiserum by affinity-chromatography using epitope-specific immunogen.
Clonality	Polyclonal

Concentration	1 mg/ml
Observed band	
Human Gene ID	127435
Human Swiss-Prot Number	Q7Z5L7
Alternative Names	PODN; SLRR5A; Podocan

Background

The protein encoded by this gene is a member of the small leucine-rich repeat protein family and contains an amino terminal CX3CX7C cysteine-rich cluster followed by a leucine-rich repeat domain. Studies suggest that this protein could function to inhibit smooth muscle cell proliferation and migration following arterial injury. [provided by RefSeq, Jul 2016],



Immunohistochemical analysis of paraffin-embedded human small intestinal carcinoma tissue. 1,primary Antibody was diluted at 1:200(4° overnight). 2, Sodium citrate pH 6.0 was used for antigen retrieval(>98°C,20min). 3,Secondary antibody was diluted at 1:2