

Repetin rabbit pAb

Cat#: orb767597 (Manual)

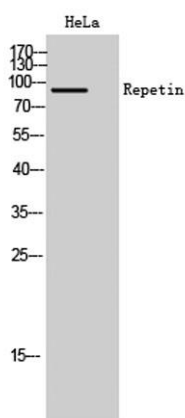
For research use only. Not intended for diagnostic use.

Product Name	Repetin rabbit pAb
Host species	Rabbit
Applications	WB;IHC
Species Cross-Reactivity	Human;Rat;Mouse;
Recommended dilutions	WB 1:500-2000;IHC-p 1:50-300
Immunogen	The antiserum was produced against synthesized peptide derived from human RPTN. AA range:648-697
Specificity	Repetin Polyclonal Antibody detects endogenous levels of Repetin protein.
Formulation	Liquid in PBS containing 50% glycerol, 0.5% BSA and 0.02% sodium azide..
Storage	Store at -20°C. Avoid repeated freeze-thaw cycles.
Protein Name	Repetin
Gene Name	RPTN
Cellular localization	Secreted, extracellular space, extracellular matrix.
Purification	The antibody was affinity-purified from rabbit antiserum by affinity-chromatography using epitope-specific immunogen.
Clonality	Polyclonal

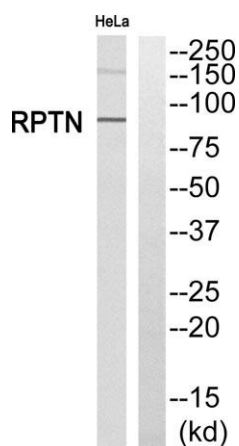
Concentration	1 mg/ml
Observed band	90kD
Human Gene ID	126638
Human Swiss-Prot Number	Q6XPR3
Alternative Names	RPTN; Repetin

Background

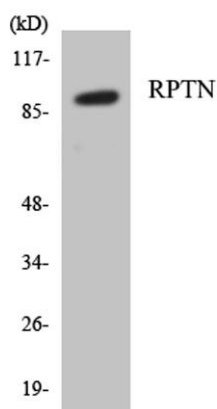
domain:Can be divided into a N-terminal domain with significant homology to S100-like calcium-binding proteins, a central domain containing a series of short tandem repeats, and two flanking segments with low homology to the consensus sequences of the central repeats.,function:Involved in the cornified cell envelope formation. Multifunctional epidermal matrix protein. Reversibly binds calcium.,PTM:Phosphorylated upon DNA damage, probably by ATM or ATR.,PTM:Potential substrate of transglutaminase. Some arginines are probably converted to citrullines by peptidylarginine deiminase.,similarity:Belongs to the S100-fused protein family.,similarity:Contains 2 EF-hand domains.,tissue specificity:Expression is scattered in the normal epidermis but strong in the acrosyngium, the inner hair root sheat and in the filiiform papilli of the tongue.,



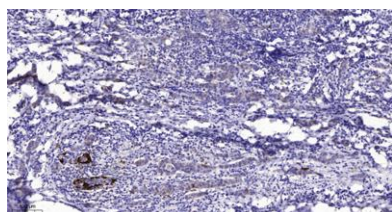
Western Blot analysis of HeLa cells using Repetin Polyclonal Antibody



Western blot analysis of RPTN Antibody. The lane on the right is blocked with the RPTN peptide.



Western blot analysis of the lysates from HepG2 cells using RPTN antibody.



Immunohistochemical analysis of paraffin-embedded human Breast cancer. 1, Antibody was diluted at 1:200(4° overnight). 2, Tris-EDTA,pH9.0 was used for antigen retrieval. 3,Secondary antibody was diluted at 1:200(room temperature, 45min).