

CNG-1 rabbit pAb**Cat#: orb767592 (Manual)**

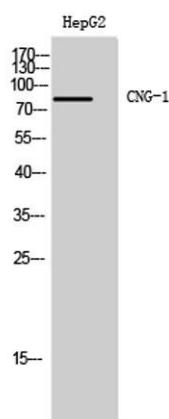
For research use only. Not intended for diagnostic use.

Product Name	CNG-1 rabbit pAb
Host species	Rabbit
Applications	WB;ELISA
Species Cross-Reactivity	Human;Mouse;Rat
Recommended dilutions	Western Blot: 1/500 - 1/2000. ELISA: 1/40000. Not yet tested in other applications.
Immunogen	The antiserum was produced against synthesized peptide derived from human CNGA1. AA range:401-450
Specificity	CNG-1 Polyclonal Antibody detects endogenous levels of CNG-1 protein.
Formulation	Liquid in PBS containing 50% glycerol, 0.5% BSA and 0.02% sodium azide..
Storage	Store at -20°C. Avoid repeated freeze-thaw cycles.
Protein Name	cGMP-gated cation channel alpha-1
Gene Name	CNGA1
Cellular localization	Cell membrane ; Multi-pass membrane protein .
Purification	The antibody was affinity-purified from rabbit antiserum by affinity-chromatography using epitope-specific immunogen.
Clonality	Polyclonal

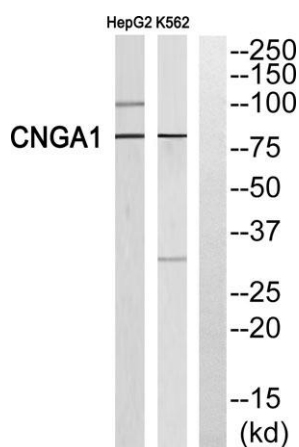
Concentration	1 mg/ml
Observed band	80kD
Human Gene ID	1259
Human Swiss-Prot Number	P29973
Alternative Names	CNGA1; CNCG; CNCG1; cGMP-gated cation channel alpha-1; Cyclic nucleotide-gated cation channel 1; Cyclic nucleotide-gated channel alpha-1; CNG channel alpha-1; CNG-1; CNG1; Cyclic nucleotide-gated channel; photoreceptor; Rod photoreceptor cG

Background

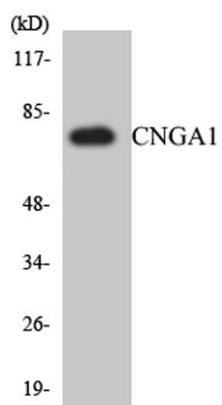
The protein encoded by this gene is involved in phototransduction. Along with another protein, the encoded protein forms a cGMP-gated cation channel in the plasma membrane, allowing depolarization of rod photoreceptors. This represents the last step in the phototransduction pathway. Defects in this gene are a cause of retinitis pigmentosa autosomal recessive (ARRP) disease. Two transcript variants encoding different isoforms have been found for this gene. [provided by RefSeq, Dec 2008],



Western Blot analysis of HepG2 cells using CNG-1 Polyclonal Antibody



Western blot analysis of CNGA1 Antibody. The lane on the right is blocked with the CNGA1 peptide.



Western blot analysis of the lysates from HepG2 cells using CNGA1 antibody.