

JDP2 (phospho Thr148) rabbit pAb**Cat#: orb767579 (Manual)**

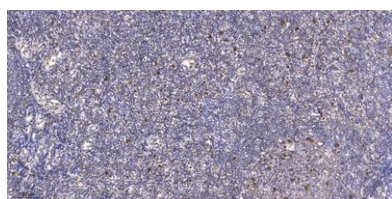
For research use only. Not intended for diagnostic use.

Product Name	JDP2 (phospho Thr148) rabbit pAb
Host species	Rabbit
Applications	IHC;IF;ELISA
Species Cross-Reactivity	Human;Mouse;Rat
Recommended dilutions	Immunohistochemistry: 1/100 - 1/300. ELISA: 1/5000. Not yet tested in other applications.
Immunogen	The antiserum was produced against synthesized peptide derived from human JDP-2 around the phosphorylation site of Thr148. AA range:114-163
Specificity	Phospho-JDP2 (T148) Polyclonal Antibody detects endogenous levels of JDP2 protein only when phosphorylated at T148.
Formulation	Liquid in PBS containing 50% glycerol, 0.5% BSA and 0.02% sodium azide..
Storage	Store at -20°C. Avoid repeated freeze-thaw cycles.
Protein Name	Jun dimerization protein 2
Gene Name	JDP2
Cellular localization	Nucleus .
Purification	The antibody was affinity-purified from rabbit antiserum by affinity-chromatography using epitope-specific immunogen.
Clonality	Polyclonal

Concentration	1 mg/ml
Observed band	
Human Gene ID	122953
Human Swiss-Prot Number	Q8WYK2
Alternative Names	JDP2; Jun dimerization protein 2

Background

function:Component of the AP-1 transcription factor that represses transactivation mediated by the Jun family of proteins. Involved in a variety of transcriptional responses associated with AP-1 such as UV-induced apoptosis, cell differentiation, tumorigenesis and antitumogenesis. Can also function as a repressor by recruiting histone deacetylase 3/HDAC3 to the promoter region of JUN. May control transcription via direct regulation of the modification of histones and the assembly of chromatin.,**PTM:**Phosphorylation of Thr-148 by MAPK8 in response to different stress conditions such as, UV irradiation, oxidative stress and anisomycin treatments.,**similarity:**Belongs to the bZIP family. ATF subfamily.,**subunit:**Forms homodimer or heterodimer with JUN, JUNB, JUND, CEBPG and ATF2 thereby inhibiting transactivation by JUN, ATF2 and CEBPG (By similarity). Binds multiple DNA elements such as cAMP-response element (CRE) and TPA response element (TRE) either as homodimer or heterodimer.,



Immunohistochemical analysis of paraffin-embedded human tonsil. 1, Antibody was diluted at 1:200(4° overnight). 2, Tris-EDTA,pH9.0 was used for antigen retrieval. 3,Secondary antibody was diluted at 1:200(room temperature, 45min).