

## PC-PLD4 rabbit pAb

**Cat#: orb767576 (Manual)**

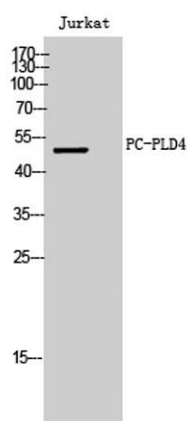
For research use only. Not intended for diagnostic use.

<b>Product Name</b>	PC-PLD4 rabbit pAb
<b>Host species</b>	Rabbit
<b>Applications</b>	WB;IHC
<b>Species Cross-Reactivity</b>	Human;Mouse;Rat
<b>Recommended dilutions</b>	WB 1:500-2000;IHC-p 1:50-300
<b>Immunogen</b>	The antiserum was produced against synthesized peptide derived from human PLD4. AA range:457-506
<b>Specificity</b>	PC-PLD4 Polyclonal Antibody detects endogenous levels of PC-PLD4 protein.
<b>Formulation</b>	Liquid in PBS containing 50% glycerol, 0.5% BSA and 0.02% sodium azide..
<b>Storage</b>	Store at -20°C. Avoid repeated freeze-thaw cycles.
<b>Protein Name</b>	Phospholipase D4
<b>Gene Name</b>	PLD4
<b>Cellular localization</b>	Endoplasmic reticulum membrane ; Single-pass type II membrane protein . Golgi apparatus, trans-Golgi network membrane ; Single-pass type II membrane protein . Nucleus . Early endosome . Cytoplasmic vesicle, phagosome . Activation of microglia induces translocation of PLD4 from the nucleus to the phagosomes. .
<b>Purification</b>	The antibody was affinity-purified from rabbit antiserum by affinity-chromatography using epitope-specific immunogen.

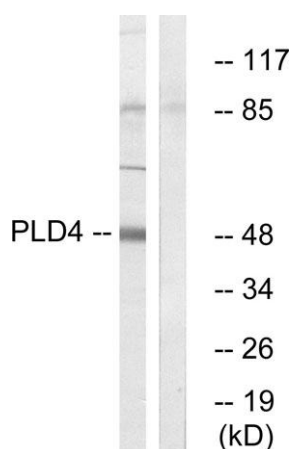
<b>Clonality</b>	Polyclonal
<b>Concentration</b>	1 mg/ml
<b>Observed band</b>	50kD
<b>Human Gene ID</b>	122618
<b>Human Swiss-Prot Number</b>	Q96BZ4
<b>Alternative Names</b>	PLD4; C14orf175; Phospholipase D4; PLD 4; Choline phosphatase 4; Phosphatidylcholine-hydrolyzing phospholipase D4

### Background

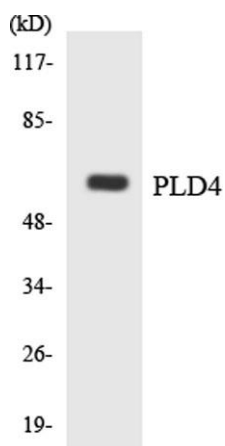
catalytic activity: A phosphatidylcholine + H<sub>2</sub>O = choline + a phosphatidate., similarity: Belongs to the phospholipase D family., similarity: Contains 2 PLD phosphodiesterase domains.,



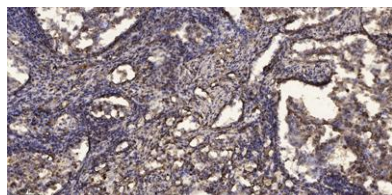
**Western Blot analysis of Jurkat cells using PC-PLD4 Polyclonal Antibody**



**Western blot analysis of lysates from Jurkat cells, using PLD4 Antibody. The lane on the right is blocked with the synthesized peptide.**



Western blot analysis of the lysates from K562 cells using PLD4 antibody.



Immunohistochemical analysis of paraffin-embedded human Squamous cell carcinoma of lung. 1, Antibody was diluted at 1:200(4° overnight). 2, Tris-EDTA,pH9.0 was used for antigen retrieval. 3,Secondary antibody was diluted at 1:200(room temperature, 45min).