

Olfactory receptor 8I2 rabbit pAb

Cat#: orb767558 (Manual)

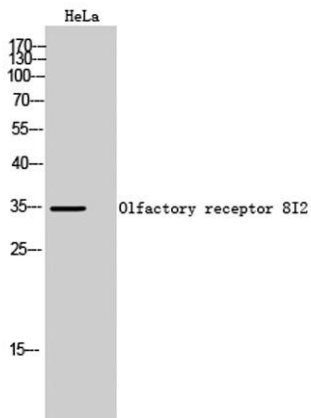
For research use only. Not intended for diagnostic use.

Product Name	Olfactory receptor 8I2 rabbit pAb
Host species	Rabbit
Applications	WB;IF;ELISA
Species Cross-Reactivity	Human;Rat;Mouse;
Recommended dilutions	Western Blot: 1/500 - 1/2000. Immunofluorescence: 1/200 - 1/1000. ELISA: 1/5000. Not yet tested in other applications.
Immunogen	The antiserum was produced against synthesized peptide derived from human OR8I2. AA range:55-104
Specificity	Olfactory receptor 8I2 Polyclonal Antibody detects endogenous levels of Olfactory receptor 8I2 protein.
Formulation	Liquid in PBS containing 50% glycerol, 0.5% BSA and 0.02% sodium azide..
Storage	Store at -20°C. Avoid repeated freeze-thaw cycles.
Protein Name	Olfactory receptor 8I2
Gene Name	OR8I2
Cellular localization	Cell membrane; Multi-pass membrane protein.
Purification	The antibody was affinity-purified from rabbit antiserum by affinity-chromatography using epitope-specific immunogen.
Clonality	Polyclonal

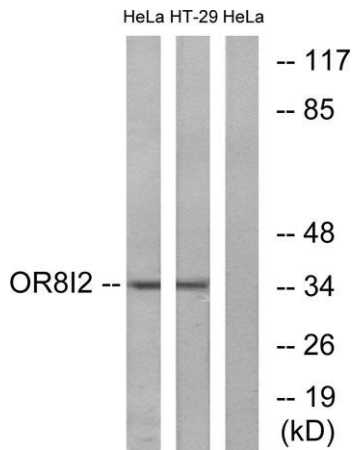
Concentration	1 mg/ml
Observed band	35kD
Human Gene ID	120586
Human Swiss-Prot Number	Q8N0Y5
Alternative Names	OR8I2; Olfactory receptor 8I2; Olfactory receptor OR11-170

Background

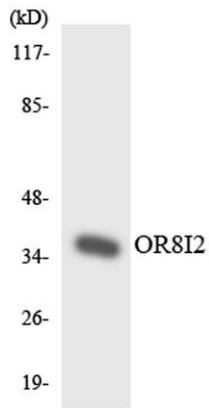
olfactory receptor family 8 subfamily I member 2(OR8I2) Homo sapiens
Olfactory receptors interact with odorant molecules in the nose, to initiate a neuronal response that triggers the perception of a smell. The olfactory receptor proteins are members of a large family of G-protein-coupled receptors (GPCR) arising from single coding-exon genes. Olfactory receptors share a 7-transmembrane domain structure with many neurotransmitter and hormone receptors and are responsible for the recognition and G protein-mediated transduction of odorant signals. The olfactory receptor gene family is the largest in the genome. The nomenclature assigned to the olfactory receptor genes and proteins for this organism is independent of other organisms. [provided by RefSeq, Jul 2008],



Western Blot analysis of HeLa cells using Olfactory receptor 8I2 Polyclonal Antibody



Western blot analysis of lysates from HeLa and HT-29 cells, using OR8I2 Antibody. The lane on the right is blocked with the synthesized peptide.



Western blot analysis of the lysates from HeLa cells using OR8I2 antibody.