

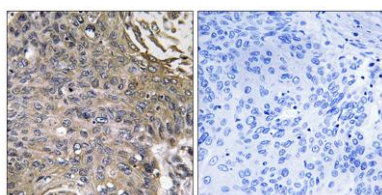
EAT-2 rabbit pAb

Cat#: orb767540 (Manual)

For research use only. Not intended for diagnostic use.

Product Name	EAT-2 rabbit pAb
Host species	Rabbit
Applications	IHC;IF;ELISA
Species Cross-Reactivity	Human;Rat;Mouse;
Recommended dilutions	Immunohistochemistry: 1/100 - 1/300. ELISA: 1/40000. Not yet tested in other applications.
Immunogen	The antiserum was produced against synthesized peptide derived from human SH2D1B. AA range:71-120
Specificity	EAT-2 Polyclonal Antibody detects endogenous levels of EAT-2 protein.
Formulation	Liquid in PBS containing 50% glycerol, 0.5% BSA and 0.02% sodium azide..
Storage	Store at -20°C. Avoid repeated freeze-thaw cycles.
Protein Name	SH2 domain-containing protein 1B
Gene Name	SH2D1B
Cellular localization	intracellular,cytosol,
Purification	The antibody was affinity-purified from rabbit antiserum by affinity-chromatography using epitope-specific immunogen.
Clonality	Polyclonal

Concentration	1 mg/ml
Observed band	
Human Gene ID	117157
Human Swiss-Prot Number	O14796
Alternative Names	SH2D1B; EAT2; SH2 domain-containing protein 1B; EWS/FLI1-activated transcript 2; EAT-2
Background	By binding phosphotyrosines through its free SRC (MIM 190090) homology-2 (SH2) domain, EAT2 regulates signal transduction through receptors expressed on the surface of antigen-presenting cells (Morra et al., 2001 [PubMed 11689425]).[supplied by OMIM, Mar 2008],



Immunohistochemistry analysis of paraffin-embedded human lung carcinoma, using SH2D1B Antibody. The picture on the right is blocked with the synthesized peptide.