

**DHRS1 rabbit pAb****Cat#: orb767533 (Manual)**

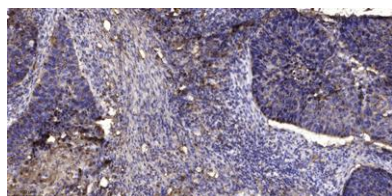
For research use only. Not intended for diagnostic use.

<b>Product Name</b>	DHRS1 rabbit pAb
<b>Host species</b>	Rabbit
<b>Applications</b>	IHC;IF;ELISA
<b>Species Cross-Reactivity</b>	Human;Mouse;Rat
<b>Recommended dilutions</b>	Immunohistochemistry: 1/100 - 1/300. ELISA: 1/20000. Not yet tested in other applications.
<b>Immunogen</b>	Synthesized peptide derived from the Internal region of human DHRS1.
<b>Specificity</b>	DHRS1 Polyclonal Antibody detects endogenous levels of DHRS1 protein.
<b>Formulation</b>	Liquid in PBS containing 50% glycerol, 0.5% BSA and 0.02% sodium azide..
<b>Storage</b>	Store at -20°C. Avoid repeated freeze-thaw cycles.
<b>Protein Name</b>	Dehydrogenase/reductase SDR family member 1
<b>Gene Name</b>	DHRS1
<b>Cellular localization</b>	Endoplasmic reticulum . May be attached to the ER membrane by its C-terminus segment. .
<b>Purification</b>	The antibody was affinity-purified from rabbit antiserum by affinity-chromatography using epitope-specific immunogen.
<b>Clonality</b>	Polyclonal

<b>Concentration</b>	1 mg/ml
<b>Observed band</b>	
<b>Human Gene ID</b>	115817
<b>Human Swiss-Prot Number</b>	Q96LJ7
<b>Alternative Names</b>	DHRS1; Dehydrogenase/reductase SDR family member 1

#### Background

This gene encodes a member of the short-chain dehydrogenases/reductases (SDR) family. The encoded enzyme contains a conserved catalytic domain and likely functions as an oxidoreductase. Multiple alternatively spliced variants, encoding the same protein, have been identified. [provided by RefSeq, Nov 2008],



**Immunohistochemical analysis of paraffin-embedded human Squamous cell carcinoma of lung. 1, Antibody was diluted at 1:200(4° overnight). 2, Tris-EDTA,pH9.0 was used for antigen retrieval. 3,Secondary antibody was diluted at 1:200(room temperature, 45min).**