

## A Cyclase IX rabbit pAb

**Cat#: orb767526 (Manual)**

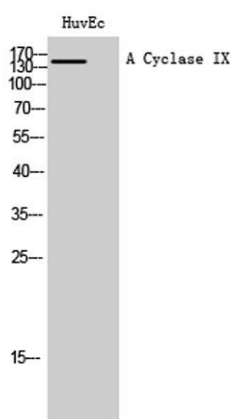
For research use only. Not intended for diagnostic use.

<b>Product Name</b>	A Cyclase IX rabbit pAb
<b>Host species</b>	Rabbit
<b>Applications</b>	WB;IHC;IF;ELISA
<b>Species Cross-Reactivity</b>	Human;Rat;Mouse;
<b>Recommended dilutions</b>	Western Blot: 1/500 - 1/2000. Immunohistochemistry: 1/100 - 1/300. ELISA: 1/10000. Not yet tested in other applications.
<b>Immunogen</b>	The antiserum was produced against synthesized peptide derived from human ADCY9. AA range:137-186
<b>Specificity</b>	A Cyclase IX Polyclonal Antibody detects endogenous levels of A Cyclase IX protein.
<b>Formulation</b>	Liquid in PBS containing 50% glycerol, 0.5% BSA and 0.02% sodium azide..
<b>Storage</b>	Store at -20°C. Avoid repeated freeze-thaw cycles.
<b>Protein Name</b>	Adenylate cyclase type 9
<b>Gene Name</b>	ADCY9
<b>Cellular localization</b>	Cell membrane ; Multi-pass membrane protein .
<b>Purification</b>	The antibody was affinity-purified from rabbit antiserum by affinity-chromatography using epitope-specific immunogen.
<b>Clonality</b>	Polyclonal

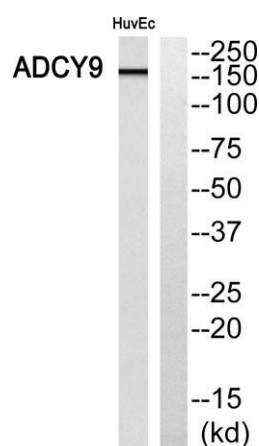
<b>Concentration</b>	1 mg/ml
<b>Observed band</b>	150kD
<b>Human Gene ID</b>	115
<b>Human Swiss-Prot Number</b>	O60503
<b>Alternative Names</b>	ADCY9; KIAA0520; Adenylate cyclase type 9; ATP pyrophosphate-lyase 9; Adenylate cyclase type IX; Adenylyl cyclase 9

## Background

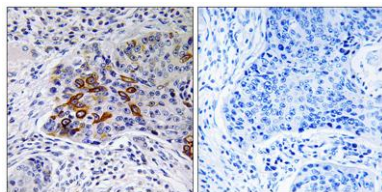
Adenylate cyclase is a membrane bound enzyme that catalyses the formation of cyclic AMP from ATP. It is regulated by a family of G protein-coupled receptors, protein kinases, and calcium. The type 9 adenylyl cyclase is a widely distributed adenylyl cyclase, and it is stimulated by beta-adrenergic receptor activation but is insensitive to forskolin, calcium, and somatostatin. [provided by RefSeq, Jul 2008],



**Western Blot analysis of HuvEc cells using A Cyclase IX Polyclonal Antibody diluted at 1:1000**



**Western blot analysis of ADCY9 Antibody. The lane on the right is blocked with the ADCY9 peptide.**



**Immunohistochemistry analysis of paraffin-embedded human lung carcinoma, using ADCY9 Antibody. The lane on the right is blocked with the ADCY9 peptide.**