

Rhophilin rabbit pAb

Cat#: orb767525 (Manual)

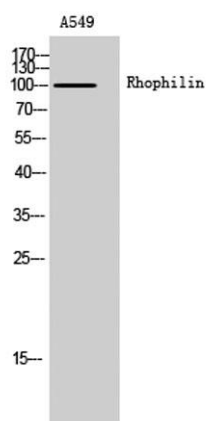
For research use only. Not intended for diagnostic use.

Product Name	Rhophilin rabbit pAb
Host species	Rabbit
Applications	WB;ELISA;IHC
Species Cross-Reactivity	Human;Rat;Mouse;
Recommended dilutions	WB 1:500-2000;IHC-p 1:50-300; ELISA 2000-20000
Immunogen	The antiserum was produced against synthesized peptide derived from human RHPN1. AA range:474-523
Specificity	Rhophilin Polyclonal Antibody detects endogenous levels of Rhophilin protein.
Formulation	Liquid in PBS containing 50% glycerol, 0.5% BSA and 0.02% sodium azide..
Storage	Store at -20°C. Avoid repeated freeze-thaw cycles.
Protein Name	Rhophilin-1
Gene Name	RHPN1
Cellular localization	cytosol,
Purification	The antibody was affinity-purified from rabbit antiserum by affinity-chromatography using epitope-specific immunogen.
Clonality	Polyclonal

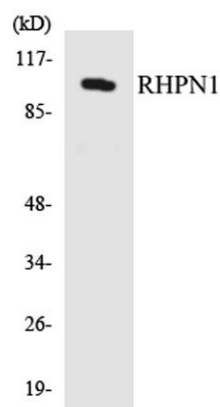
Concentration	1 mg/ml
Observed band	100kD
Human Gene ID	114822
Human Swiss-Prot Number	Q8TCX5
Alternative Names	RHPN1; KIAA1929; Rhophilin-1; GTP-Rho-binding protein 1

Background

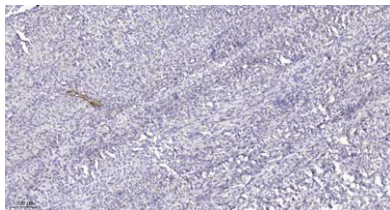
domain:The PDZ domain mediates interaction with ROPN1.,function:Has no enzymatic activity. May serve as a target for Rho, and interact with some cytoskeletal component upon Rho binding or relay a Rho signal to other molecules.,similarity:Belongs to the RHPN family.,similarity:Contains 1 BRO1 domain.,similarity:Contains 1 PDZ (DHR) domain.,similarity:Contains 1 REM (Hr1) repeat.,subunit:Binds specifically to GTP-Rho. Interacts with ROPN1.,



Western Blot analysis of A549 cells using Rhophilin Polyclonal Antibody



Western blot analysis of the lysates from HepG2 cells using RHPN1 antibody.



Immunohistochemical analysis of paraffin-embedded human Colon cancer. 1, Antibody was diluted at 1:200(4° overnight). 2, Tris-EDTA,pH9.0 was used for antigen retrieval. 3,Secondary antibody was diluted at 1:200(room temperature, 45min).