

**AChR $\beta$ 1 rabbit pAb****Cat#: orb767518 (Manual)**

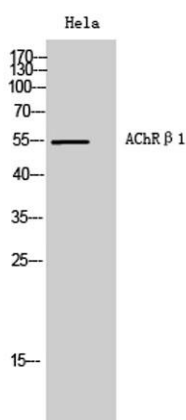
For research use only. Not intended for diagnostic use.

<b>Product Name</b>	AChR $\beta$ 1 rabbit pAb
<b>Host species</b>	Rabbit
<b>Applications</b>	WB;ELISA
<b>Species Cross-Reactivity</b>	Human;Mouse;Rat
<b>Recommended dilutions</b>	Western Blot: 1/500 - 1/2000. ELISA: 1/5000. Not yet tested in other applications.
<b>Immunogen</b>	The antiserum was produced against synthesized peptide derived from human CHRNA1. AA range:41-90
<b>Specificity</b>	AChR $\beta$ 1 Polyclonal Antibody detects endogenous levels of AChR $\beta$ 1 protein.
<b>Formulation</b>	Liquid in PBS containing 50% glycerol, 0.5% BSA and 0.02% sodium azide..
<b>Storage</b>	Store at -20°C. Avoid repeated freeze-thaw cycles.
<b>Protein Name</b>	Acetylcholine receptor subunit beta
<b>Gene Name</b>	CHRNA1
<b>Cellular localization</b>	Cell junction, synapse, postsynaptic cell membrane; Multi-pass membrane protein. Cell membrane; Multi-pass membrane protein.
<b>Purification</b>	The antibody was affinity-purified from rabbit antiserum by affinity-chromatography using epitope-specific immunogen.
<b>Clonality</b>	Polyclonal

<b>Concentration</b>	1 mg/ml
<b>Observed band</b>	55kD
<b>Human Gene ID</b>	1140
<b>Human Swiss-Prot Number</b>	P11230
<b>Alternative Names</b>	CHRNA1; ACHRB; CHRNB; Acetylcholine receptor subunit beta

### Background

The muscle acetylcholine receptor is composed of five subunits: two alpha subunits and one beta, one gamma, and one delta subunit. This gene encodes the beta subunit of the acetylcholine receptor. The acetylcholine receptor changes conformation upon acetylcholine binding leading to the opening of an ion-conducting channel across the plasma membrane. Mutations in this gene are associated with slow-channel congenital myasthenic syndrome. [provided by RefSeq, Jul 2008],



**Western Blot analysis of HeLa cells using AChRβ1 Polyclonal Antibody**