

## A Cyclase VIII rabbit pAb

**Cat#: orb767517 (Manual)**

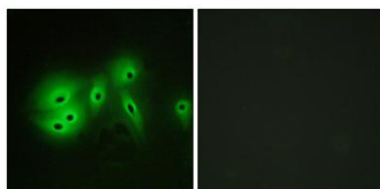
For research use only. Not intended for diagnostic use.

<b>Product Name</b>	A Cyclase VIII rabbit pAb
<b>Host species</b>	Rabbit
<b>Applications</b>	IHC;IF;ELISA
<b>Species Cross-Reactivity</b>	Human;Mouse;Rat
<b>Recommended dilutions</b>	Immunohistochemistry: 1/100 - 1/300. Immunofluorescence: 1/200 - 1/1000. ELISA: 1/40000. Not yet tested in other applications.
<b>Immunogen</b>	The antiserum was produced against synthesized peptide derived from human ADCY8. AA range:591-640
<b>Specificity</b>	A Cyclase VIII Polyclonal Antibody detects endogenous levels of A Cyclase VIII protein.
<b>Formulation</b>	Liquid in PBS containing 50% glycerol, 0.5% BSA and 0.02% sodium azide..
<b>Storage</b>	Store at -20°C. Avoid repeated freeze-thaw cycles.
<b>Protein Name</b>	Adenylate cyclase type 8
<b>Gene Name</b>	ADCY8
<b>Cellular localization</b>	Cell membrane ; Multi-pass membrane protein . Basolateral cell membrane . Apical cell membrane . Cell junction, synapse . Cell projection, dendrite . Cell projection, axon . Cell junction, synapse, presynaptic cell membrane . Cell junction, synapse, posts
<b>Purification</b>	The antibody was affinity-purified from rabbit antiserum by affinity-chromatography using epitope-specific immunogen.

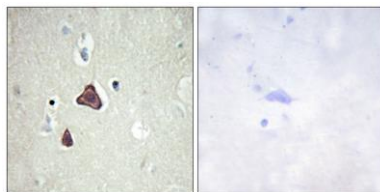
<b>Clonality</b>	Polyclonal
<b>Concentration</b>	1 mg/ml
<b>Observed band</b>	
<b>Human Gene ID</b>	114
<b>Human Swiss-Prot Number</b>	P40145
<b>Alternative Names</b>	ADCY8; Adenylate cyclase type 8; ATP pyrophosphate-lyase 8; Adenylate cyclase type VIII; Adenylyl cyclase 8; AC8; Ca(2+)/calmodulin-activated adenylyl cyclase

**Background**

Adenylate cyclase is a membrane bound enzyme that catalyses the formation of cyclic AMP from ATP. The enzymatic activity is under the control of several hormones, and different polypeptides participate in the transduction of the signal from the receptor to the catalytic moiety. Stimulatory or inhibitory receptors (Rs and Ri) interact with G proteins (Gs and Gi) that exhibit GTPase activity and they modulate the activity of the catalytic subunit of the adenylyl cyclase [provided by RefSeq, Jul 2008],



**Immunofluorescence analysis of A549 cells, using ADCY8 Antibody. The picture on the right is blocked with the synthesized peptide.**



**Immunohistochemistry analysis of paraffin-embedded human brain tissue, using ADCY8 Antibody. The picture on the right is blocked with the synthesized peptide.**