

AChR α 1 rabbit pAb**Cat#: orb767515 (Manual)**

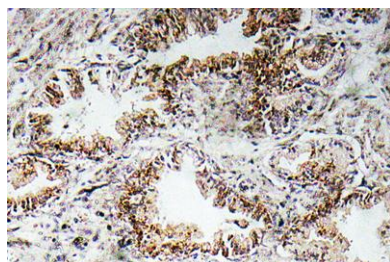
For research use only. Not intended for diagnostic use.

Product Name	AChR α 1 rabbit pAb
Host species	Rabbit
Applications	IHC;IF;ELISA
Species Cross-Reactivity	Human;Mouse;Rat
Recommended dilutions	Immunohistochemistry: 1/100 - 1/300. ELISA: 1/10000. Not yet tested in other applications.
Immunogen	The antiserum was produced against synthesized peptide derived from human AChR α 1. AA range:168-217
Specificity	AChR α 1 Polyclonal Antibody detects endogenous levels of AChR α 1 protein.
Formulation	Liquid in PBS containing 50% glycerol, 0.5% BSA and 0.02% sodium azide..
Storage	Store at -20°C. Avoid repeated freeze-thaw cycles.
Protein Name	Acetylcholine receptor subunit alpha
Gene Name	CHRNA1
Cellular localization	Cell junction, synapse, postsynaptic cell membrane ; Multi-pass membrane protein . Cell membrane ; Multi-pass membrane protein .
Purification	The antibody was affinity-purified from rabbit antiserum by affinity-chromatography using epitope-specific immunogen.
Clonality	Polyclonal

Concentration	1 mg/ml
Observed band	
Human Gene ID	1134
Human Swiss-Prot Number	P02708
Alternative Names	CHRNA1; ACHRA; CHNRA; Acetylcholine receptor subunit alpha

Background

The muscle acetylcholine receptor consists of 5 subunits of 4 different types: 2 alpha subunits and 1 each of the beta, gamma, and delta subunits. This gene encodes an alpha subunit that plays a role in acetylcholine binding/channel gating. Alternatively spliced transcript variants encoding different isoforms have been identified. [provided by RefSeq, Nov 2012],



Immunohistochemistry analysis of AChRα1 antibody in paraffin-embedded human prostate carcinoma tissue.