

KLF8 rabbit pAb

Cat#: orb767504 (Manual)

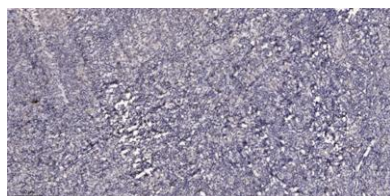
For research use only. Not intended for diagnostic use.

Product Name	KLF8 rabbit pAb
Host species	Rabbit
Applications	IHC;IF;ELISA
Species Cross-Reactivity	Human;Rat;Mouse;
Recommended dilutions	Immunohistochemistry: 1/100 - 1/300. ELISA: 1/10000. Not yet tested in other applications.
Immunogen	The antiserum was produced against synthesized peptide derived from human KLF8. AA range:191-240
Specificity	KLF8 Polyclonal Antibody detects endogenous levels of KLF8 protein.
Formulation	Liquid in PBS containing 50% glycerol, 0.5% BSA and 0.02% sodium azide..
Storage	Store at -20°C. Avoid repeated freeze-thaw cycles.
Protein Name	Krueppel-like factor 8
Gene Name	KLF8
Cellular localization	Nucleus .
Purification	The antibody was affinity-purified from rabbit antiserum by affinity-chromatography using epitope-specific immunogen.
Clonality	Polyclonal

Concentration	1 mg/ml
Observed band	
Human Gene ID	11279
Human Swiss-Prot Number	O95600
Alternative Names	KLF8; BKLF3; ZNF741; Krueppel-like factor 8; Basic krueppel-like factor 3; Zinc finger protein 741

Background

This gene encodes a protein which is a member of the Sp/KLF family of transcription factors. Members of this family contain a C-terminal DNA-binding domain with three Kruppel-like zinc fingers. The encoded protein is thought to play an important role in the regulation of epithelial to mesenchymal transition, a process which occurs normally during development but also during metastasis. A pseudogene has been identified on chromosome 16. Alternative splicing results in multiple transcript variants. [provided by RefSeq, Apr 2009],



Immunohistochemical analysis of paraffin-embedded human tonsil. 1, Antibody was diluted at 1:200(4° overnight). 2, Tris-EDTA,pH9.0 was used for antigen retrieval. 3,Secondary antibody was diluted at 1:200(room temperature, 45min).