

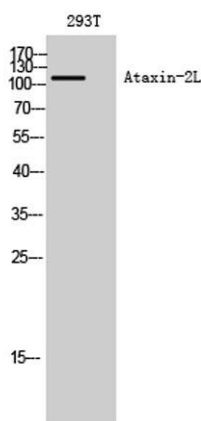
Ataxin-2L rabbit pAb**Cat#: orb767503 (Manual)**

For research use only. Not intended for diagnostic use.

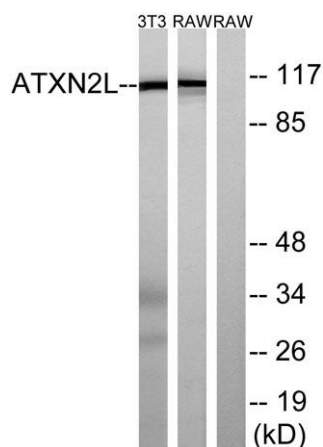
Product Name	Ataxin-2L rabbit pAb
Host species	Rabbit
Applications	WB;ELISA
Species Cross-Reactivity	Human;Rat;Mouse;
Recommended dilutions	Western Blot: 1/500 - 1/2000. ELISA: 1/20000. Not yet tested in other applications.
Immunogen	The antiserum was produced against synthesized peptide derived from human ATXN2L. AA range:571-620
Specificity	Ataxin-2L Polyclonal Antibody detects endogenous levels of Ataxin-2L protein.
Formulation	Liquid in PBS containing 50% glycerol, 0.5% BSA and 0.02% sodium azide..
Storage	Store at -20°C. Avoid repeated freeze-thaw cycles.
Protein Name	Ataxin-2-like protein
Gene Name	ATXN2L
Cellular localization	Membrane ; Peripheral membrane protein . Cytoplasm . Nucleus speckle . Cytoplasmic granule . Predominantly cytoplasmic but is also detected in nuclear speckles (PubMed:23209657). Component of cytoplasmic stress granules (PubMed:23209657). Inhibition of methylation alters nuclear localization (PubMed:25748791). Methylation does not seem to be required for localization to stress granules under stress conditions (PubMed:25748791). .

Purification	The antibody was affinity-purified from rabbit antiserum by affinity-chromatography using epitope-specific immunogen.
Clonality	Polyclonal
Concentration	1 mg/ml
Observed band	113kD
Human Gene ID	11273
Human Swiss-Prot Number	Q8WWM7
Alternative Names	ATXN2L; A2D; A2LG; A2LP; A2RP; Ataxin-2-like protein; Ataxin-2 domain protein; Ataxin-2-related protein

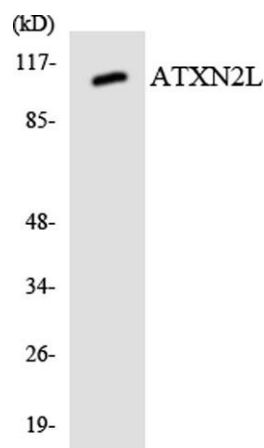
Background This gene encodes an ataxin type 2 related protein of unknown function. This protein is a member of the spinocerebellar ataxia (SCAs) family, which is associated with a complex group of neurodegenerative disorders. Several alternatively spliced transcripts encoding different isoforms have been found for this gene. [provided by RefSeq, Jul 2008],



Western Blot analysis of 293T cells using Ataxin-2L Polyclonal Antibody diluted at 1:2000



Western blot analysis of lysates from NIH/3T3 and RAW264.7 cells, using ATXN2L Antibody. The lane on the right is blocked with the synthesized peptide.



Western blot analysis of the lysates from 293 cells using ATXN2L antibody.