

CHP rabbit pAb**Cat#: orb767501 (Manual)**

For research use only. Not intended for diagnostic use.

Product Name	CHP rabbit pAb
Host species	Rabbit
Applications	WB;ELISA
Species Cross-Reactivity	Human;Mouse;Rat
Recommended dilutions	Western Blot: 1/500 - 1/2000. ELISA: 1/20000. Not yet tested in other applications.
Immunogen	Synthesized peptide derived from the Internal region of human CHP.
Specificity	CHP Polyclonal Antibody detects endogenous levels of CHP protein.
Formulation	Liquid in PBS containing 50% glycerol, 0.5% BSA and 0.02% sodium azide..
Storage	Store at -20°C. Avoid repeated freeze-thaw cycles.
Protein Name	Calcineurin B homologous protein 1
Gene Name	CHP1
Cellular localization	Nucleus . Cytoplasm . Cytoplasm, cytoskeleton . Endomembrane system . Endoplasmic reticulum-Golgi intermediate compartment . Endoplasmic reticulum . Cell membrane . Membrane ; Lipid-anchor . Localizes in cytoplasmic compartments in dividing cells. Localizes in the nucleus in quiescent cells. Exported from the nucleus to the cytoplasm through a nuclear export signal (NES) and CRM1-dependent pathway. May shuttle between nucleus and cytoplasm. Localizes with the microtubule-organizing center (MTOC) and extends toward the periphery along microtubules. Associates with membranes of the early secretory pathway in a GAPDH-independent, N-myristoylation- and calcium-dependent manner. Colocalizes with the mitotic spindle microtubules. Colocalizes with GAPDH along

microtubules. Colocalizes with SLC9A1

Purification

The antibody was affinity-purified from rabbit antiserum by affinity-chromatography using epitope-specific immunogen.

Clonality

Polyclonal

Concentration

1 mg/ml

Observed band

24kD

Human Gene ID

11261

Human Swiss-Prot Number

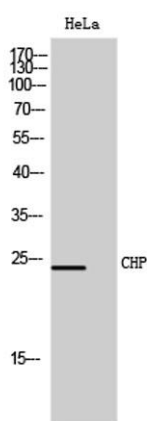
Q99653

Alternative Names

CHP1; CHP; Calcineurin B homologous protein 1; Calcineurin B-like protein; Calcium-binding protein CHP; Calcium-binding protein p22; EF-hand calcium-binding domain-containing protein p22

Background

This gene encodes a phosphoprotein that binds to the Na⁺/H⁺ exchanger NHE1. This protein serves as an essential cofactor which supports the physiological activity of NHE family members and may play a role in the mitogenic regulation of NHE1. The protein shares similarity with calcineurin B and calmodulin and it is also known to be an endogenous inhibitor of calcineurin activity. [provided by RefSeq, Jul 2008],



Western Blot analysis of HeLa cells using CHP Polyclonal Antibody