

Histamine H3 Receptor rabbit pAb**Cat#: orb767500 (Manual)**

For research use only. Not intended for diagnostic use.

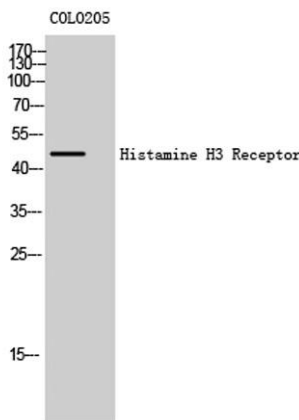
Product Name	Histamine H3 Receptor rabbit pAb
Host species	Rabbit
Applications	WB;IHC;IF;ELISA
Species Cross-Reactivity	Human;Mouse;Rat
Recommended dilutions	Western Blot: 1/500 - 1/2000. Immunohistochemistry: 1/100 - 1/300. Immunofluorescence: 1/200 - 1/1000. ELISA: 1/5000. Not yet tested in other applications.
Immunogen	The antiserum was produced against synthesized peptide derived from human HRH3. AA range:291-340
Specificity	Histamine H3 Receptor Polyclonal Antibody detects endogenous levels of Histamine H3 Receptor protein.
Formulation	Liquid in PBS containing 50% glycerol, 0.5% BSA and 0.02% sodium azide..
Storage	Store at -20°C. Avoid repeated freeze-thaw cycles.
Protein Name	Histamine H3 receptor
Gene Name	HRH3
Cellular localization	Cell membrane; Multi-pass membrane protein.
Purification	The antibody was affinity-purified from rabbit antiserum by affinity-chromatography using epitope-specific immunogen.
Clonality	Polyclonal

Explore. Bioreagents.

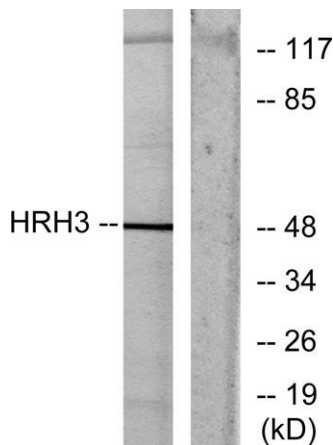
Concentration	1 mg/ml
Observed band	49kD
Human Gene ID	11255
Human Swiss-Prot Number	Q9Y5N1
Alternative Names	HRH3; GPCR97; Histamine H3 receptor; H3R; HH3R; G-protein coupled receptor 97

Background

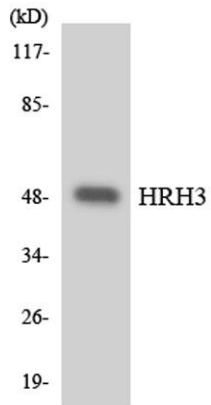
Histamine is a ubiquitous messenger molecule released from mast cells, enterochromaffin-like cells, and neurons. Its various actions are mediated by histamine receptors H1, H2, H3 and H4. This gene encodes one of the histamine receptors (H3) which belongs to the family 1 of G protein-coupled receptors. It is an integral membrane protein and can regulate neurotransmitter release. This receptor can also increase voltage-dependent calcium current in smooth muscles and innervates the blood vessels and the heart in cardiovascular system. [provided by RefSeq, Jul 2008],



Western Blot analysis of COLO205 cells using Histamine H3 Receptor Polyclonal Antibody



Western blot analysis of lysates from COLO205 cells, using HRH3 Antibody. The lane on the right is blocked with the synthesized peptide.



Western blot analysis of the lysates from RAW264.7 cells using HRH3 antibody.