

Gemin3 rabbit pAb**Cat#: orb767495 (Manual)**

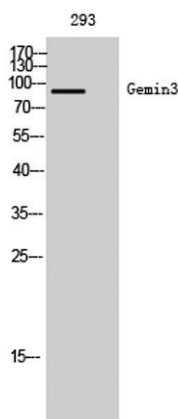
For research use only. Not intended for diagnostic use.

Product Name	Gemin3 rabbit pAb
Host species	Rabbit
Applications	WB;ELISA
Species Cross-Reactivity	Human;Mouse
Recommended dilutions	Western Blot: 1/500 - 1/2000. ELISA: 1/40000. Not yet tested in other applications.
Immunogen	The antiserum was produced against synthesized peptide derived from human DDX20. AA range:273-322
Specificity	Gemin3 Polyclonal Antibody detects endogenous levels of Gemin3 protein.
Formulation	Liquid in PBS containing 50% glycerol, 0.5% BSA and 0.02% sodium azide..
Storage	Store at -20°C. Avoid repeated freeze-thaw cycles.
Protein Name	Probable ATP-dependent RNA helicase DDX20
Gene Name	DDX20
Cellular localization	Cytoplasm . Nucleus, gem . Localized in subnuclear structures next to coiled bodies, called Gemini of Cajal bodies (Gems). .
Purification	The antibody was affinity-purified from rabbit antiserum by affinity-chromatography using epitope-specific immunogen.
Clonality	Polyclonal

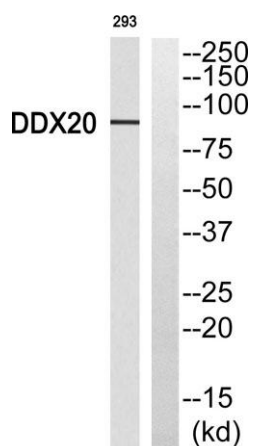
Concentration	1 mg/ml
Observed band	90kD
Human Gene ID	11218
Human Swiss-Prot Number	Q9UHI6
Alternative Names	DDX20; DP103; GEMIN3; Probable ATP-dependent RNA helicase DDX20; Component of gems 3; DEAD box protein 20; DEAD box protein DP 103; Gemin-3

Background

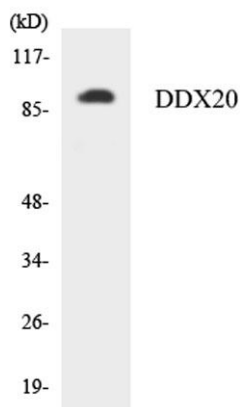
DEAD box proteins, characterized by the conserved motif Asp-Glu-Ala-Asp (DEAD), are putative RNA helicases. They are implicated in a number of cellular processes involving alteration of RNA secondary structure such as translation initiation, nuclear and mitochondrial splicing, and ribosome and spliceosome assembly. Based on their distribution patterns, some members of this family are believed to be involved in embryogenesis, spermatogenesis, and cellular growth and division. This gene encodes a DEAD box protein, which has an ATPase activity and is a component of the survival of motor neurons (SMN) complex. This protein interacts directly with SMN, the spinal muscular atrophy gene product, and may play a catalytic role in the function of the SMN complex on RNPs. [provided by RefSeq, Jul 2008],



Western Blot analysis of 293 cells using Gemin3 Polyclonal Antibody



Western blot analysis of DDX20 Antibody. The lane on the right is blocked with the DDX20 peptide.



Western blot analysis of the lysates from K562 cells using DDX20 antibody.