

**FAF1 rabbit pAb****Cat#: orb767477 (Manual)**

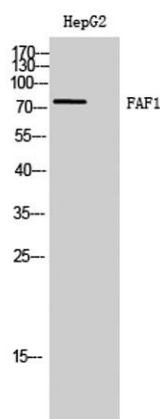
For research use only. Not intended for diagnostic use.

<b>Product Name</b>	FAF1 rabbit pAb
<b>Host species</b>	Rabbit
<b>Applications</b>	WB;ELISA
<b>Species Cross-Reactivity</b>	Human;Mouse;Rat
<b>Recommended dilutions</b>	Western Blot: 1/500 - 1/2000. ELISA: 1/5000. Not yet tested in other applications.
<b>Immunogen</b>	The antiserum was produced against synthesized peptide derived from human FAF1. AA range:531-580
<b>Specificity</b>	FAF1 Polyclonal Antibody detects endogenous levels of FAF1 protein.
<b>Formulation</b>	Liquid in PBS containing 50% glycerol, 0.5% BSA and 0.02% sodium azide..
<b>Storage</b>	Store at -20°C. Avoid repeated freeze-thaw cycles.
<b>Protein Name</b>	FAS-associated factor 1
<b>Gene Name</b>	FAF1
<b>Cellular localization</b>	Nucleus .
<b>Purification</b>	The antibody was affinity-purified from rabbit antiserum by affinity-chromatography using epitope-specific immunogen.
<b>Clonality</b>	Polyclonal

<b>Concentration</b>	1 mg/ml
<b>Observed band</b>	75kD
<b>Human Gene ID</b>	11124
<b>Human Swiss-Prot Number</b>	Q9UNN5
<b>Alternative Names</b>	FAF1; UBXD12; UBXN3A; CGI-03; FAS-associated factor 1; hFAF1; UBX domain-containing protein 12; UBX domain-containing protein 3A

### Background

Interaction of Fas ligand (TNFSF6) with the FAS antigen (TNFRSF6) mediates programmed cell death, also called apoptosis, in a number of organ systems. The protein encoded by this gene binds to FAS antigen and can initiate apoptosis or enhance apoptosis initiated through FAS antigen. Initiation of apoptosis by the protein encoded by this gene requires a ubiquitin-like domain but not the FAS-binding domain. [provided by RefSeq, Jul 2008],



**Western Blot analysis of HepG2 cells using FAF1 Polyclonal Antibody**