

**Rab 31 rabbit pAb****Cat#: orb767459 (Manual)**

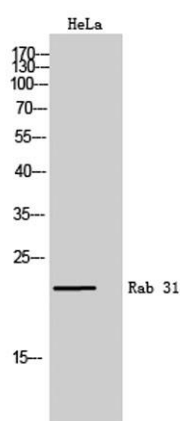
For research use only. Not intended for diagnostic use.

<b>Product Name</b>	Rab 31 rabbit pAb
<b>Host species</b>	Rabbit
<b>Applications</b>	WB; ELISA;IHC
<b>Species Cross-Reactivity</b>	Human;Mouse;Rat
<b>Recommended dilutions</b>	WB 1:500-2000;IHC-p 1:50-300; ELISA 2000-20000
<b>Immunogen</b>	Synthesized peptide derived from Rab 31 . at AA range: 50-130
<b>Specificity</b>	Rab 31 Polyclonal Antibody detects endogenous levels of Rab 31 protein.
<b>Formulation</b>	Liquid in PBS containing 50% glycerol, 0.5% BSA and 0.02% sodium azide..
<b>Storage</b>	Store at -20°C. Avoid repeated freeze-thaw cycles.
<b>Protein Name</b>	Ras-related protein Rab-31
<b>Gene Name</b>	RAB31
<b>Cellular localization</b>	Golgi apparatus, trans-Golgi network . Golgi apparatus, trans-Golgi network membrane ; Lipid-anchor ; Cytoplasmic side . Early endosome . Cytoplasmic vesicle, phagosome . Cytoplasmic vesicle, phagosome membrane ; Lipid-anchor ; Cytoplasmic side . Rapidly
<b>Purification</b>	The antibody was affinity-purified from rabbit antiserum by affinity-chromatography using epitope-specific immunogen.

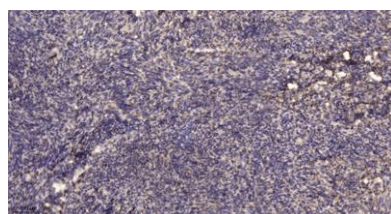
<b>Clonality</b>	Polyclonal
<b>Concentration</b>	1 mg/ml
<b>Observed band</b>	21kD
<b>Human Gene ID</b>	11031
<b>Human Swiss-Prot Number</b>	Q13636
<b>Alternative Names</b>	RAB31; RAB22B; Ras-related protein Rab-31; Ras-related protein Rab-22B

### Background

Small GTP-binding proteins of the RAB family, such as RAB31, play essential roles in vesicle and granule targeting (Bao et al., 2002 [PubMed 11784320]).[supplied by OMIM, Jul 2009],



**Western Blot analysis of HeLa cells using Rab 31 Polyclonal Antibody**



**Immunohistochemical analysis of paraffin-embedded human uterus. 1, Antibody was diluted at 1:200(4° overnight). 2, Tris-EDTA,pH9.0 was used for antigen retrieval. 3,Secondary antibody was diluted at 1:200(room temperature, 45min).**