

LEKTI rabbit pAb

Cat#: orb767456 (Manual)

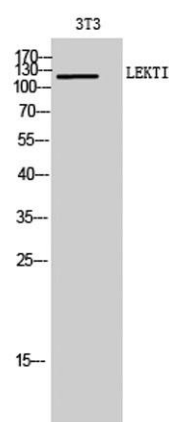
For research use only. Not intended for diagnostic use.

Product Name	LEKTI rabbit pAb
Host species	Rabbit
Applications	WB;IHC;IF;ELISA
Species Cross-Reactivity	Human;Rat;Mouse;
Recommended dilutions	Western Blot: 1/500 - 1/2000. Immunohistochemistry: 1/100 - 1/300. ELISA: 1/20000. Not yet tested in other applications.
Immunogen	The antiserum was produced against synthesized peptide derived from human SPINK5. AA range:494-543
Specificity	LEKTI Polyclonal Antibody detects endogenous levels of LEKTI protein.
Formulation	Liquid in PBS containing 50% glycerol, 0.5% BSA and 0.02% sodium azide..
Storage	Store at -20°C. Avoid repeated freeze-thaw cycles.
Protein Name	Serine protease inhibitor Kazal-type 5
Gene Name	SPINK5
Cellular localization	Secreted.
Purification	The antibody was affinity-purified from rabbit antiserum by affinity-chromatography using epitope-specific immunogen.
Clonality	Polyclonal

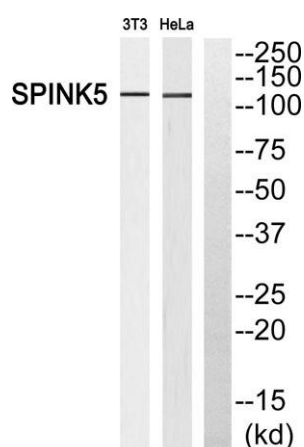
Concentration	1 mg/ml
Observed band	120kD
Human Gene ID	11005
Human Swiss-Prot Number	Q9NQ38
Alternative Names	SPINK5; Serine protease inhibitor Kazal-type 5; Lympho-epithelial Kazal-type-related inhibitor; LEKTI

Background

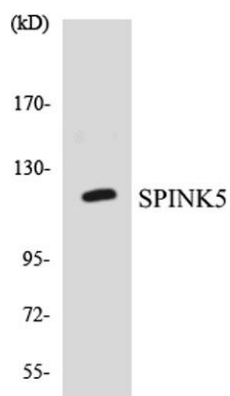
This gene encodes a multidomain serine protease inhibitor that contains 15 potential inhibitory domains. The encoded preproprotein is proteolytically processed to generate multiple protein products, which may exhibit unique activities and specificities. These proteins may play a role in skin and hair morphogenesis, as well as anti-inflammatory and antimicrobial protection of mucous epithelia. Mutations in this gene may result in Netherton syndrome, a disorder characterized by ichthyosis, defective cornification, and atopy. This gene is present in a gene cluster on chromosome 5. Alternative splicing results in multiple transcript variants. [provided by RefSeq, Oct 2015],



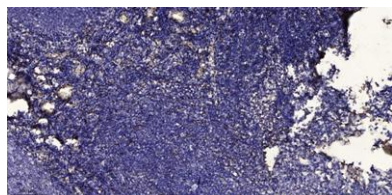
Western Blot analysis of 3T3 cells using LEKTI Polyclonal Antibody



Western blot analysis of SPINK5 Antibody. The lane on the right is blocked with the SPINK5 peptide.



Western blot analysis of the lysates from COLO205 cells using SPINK5 antibody.



Immunohistochemical analysis of paraffin-embedded human tonsil. 1, Antibody was diluted at 1:200(4° overnight). 2, Tris-EDTA,pH9.0 was used for antigen retrieval. 3,Secondary antibody was diluted at 1:200(room temperature, 30min).