

**ACSVL6 rabbit pAb****Cat#: orb767452 (Manual)**

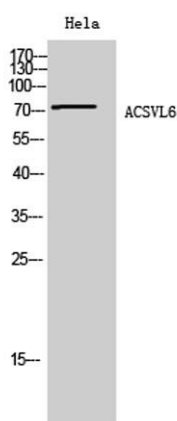
For research use only. Not intended for diagnostic use.

<b>Product Name</b>	ACSVL6 rabbit pAb
<b>Host species</b>	Rabbit
<b>Applications</b>	WB;IHC;IF;ELISA
<b>Species Cross-Reactivity</b>	Human;Rat;Mouse;
<b>Recommended dilutions</b>	Western Blot: 1/500 - 1/2000. Immunohistochemistry: 1/100 - 1/300. Immunofluorescence: 1/200 - 1/1000. ELISA: 1/40000. Not yet tested in other applications.
<b>Immunogen</b>	The antiserum was produced against synthesized peptide derived from human SLC27A5. AA range:481-530
<b>Specificity</b>	ACSVL6 Polyclonal Antibody detects endogenous levels of ACSVL6 protein.
<b>Formulation</b>	Liquid in PBS containing 50% glycerol, 0.5% BSA and 0.02% sodium azide..
<b>Storage</b>	Store at -20°C. Avoid repeated freeze-thaw cycles.
<b>Protein Name</b>	Bile acyl-CoA synthetase
<b>Gene Name</b>	SLC27A5
<b>Cellular localization</b>	Endoplasmic reticulum membrane ; Multi-pass membrane protein . Microsome . Cell membrane ; Multi-pass membrane protein .
<b>Purification</b>	The antibody was affinity-purified from rabbit antiserum by affinity-chromatography using      epitope-specific immunogen.
<b>Clonality</b>	Polyclonal

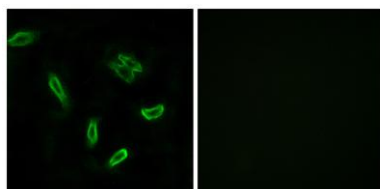
<b>Concentration</b>	1 mg/ml
<b>Observed band</b>	75kD
<b>Human Gene ID</b>	10998
<b>Human Swiss-Prot Number</b>	Q9Y2P5
<b>Alternative Names</b>	SLC27A5; ACSB; ACSVL6; FACVL3; FATP5; Bile acyl-CoA synthetase; BACS; Bile acid-CoA ligase; BA-CoA ligase; BAL; Cholate--CoA ligase; Fatty acid transport protein 5; FATP-5; Fatty-acid-coenzyme A ligase; very long-chain 3; Solute carrier fam

### Background

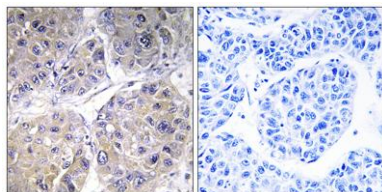
The protein encoded by this gene is an isozyme of very long-chain acyl-CoA synthetase (VLCs). It is capable of activating very long-chain fatty-acids containing 24- and 26-carbons. It is expressed in liver and associated with endoplasmic reticulum but not with peroxisomes. Its primary role is in fatty acid elongation or complex lipid synthesis rather than in degradation. This gene has a mouse ortholog. [provided by RefSeq, Jul 2008],



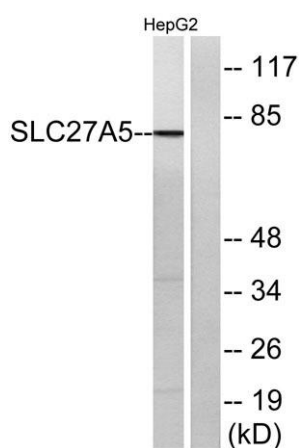
**Western Blot analysis of HeLa cells using ACSVL6 Polyclonal Antibody diluted at 1:1000**



**Immunofluorescence analysis of A549 cells, using SLC27A5 Antibody. The picture on the right is blocked with the synthesized peptide.**



**Immunohistochemistry analysis of paraffin-embedded human liver carcinoma tissue, using SLC27A5 Antibody. The picture on the right is blocked with the synthesized peptide.**



**Western blot analysis of lysates from HepG2 cells, using SLC27A5 Antibody. The lane on the right is blocked with the synthesized peptide.**