

ACOT2 rabbit pAb

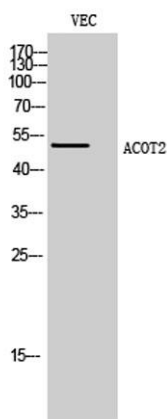
Cat#: orb767449 (Manual)

For research use only. Not intended for diagnostic use.

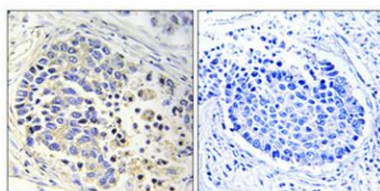
Product Name	ACOT2 rabbit pAb
Host species	Rabbit
Applications	WB;IHC;IF;ELISA
Species Cross-Reactivity	Human;Rat;Mouse;
Recommended dilutions	Western Blot: 1/500 - 1/2000. Immunohistochemistry: 1/100 - 1/300. Immunofluorescence: 1/200 - 1/1000. ELISA: 1/40000. Not yet tested in other applications.
Immunogen	The antiserum was produced against synthesized peptide derived from human ACOT2. AA range:171-220
Specificity	ACOT2 Polyclonal Antibody detects endogenous levels of ACOT2 protein.
Formulation	Liquid in PBS containing 50% glycerol, 0.5% BSA and 0.02% sodium azide..
Storage	Store at -20°C. Avoid repeated freeze-thaw cycles.
Protein Name	Acyl-coenzyme A thioesterase 2 mitochondrial
Gene Name	ACOT2
Cellular localization	Mitochondrion .
Purification	The antibody was affinity-purified from rabbit antiserum by affinity-chromatography using epitope-specific immunogen.
Clonality	Polyclonal

Concentration	1 mg/ml
Observed band	53kD
Human Gene ID	10965
Human Swiss-Prot Number	P49753
Alternative Names	ACOT2; PTE2; PTE2A; Acyl-coenzyme A thioesterase 2; mitochondrial; Acyl-CoA thioesterase 2; Acyl-coenzyme A thioester hydrolase 2a; CTE-Ia; Long-chain acyl-CoA thioesterase 2; ZAP128

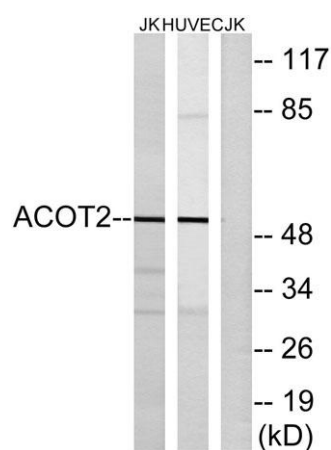
Background This gene encodes a member of the acyl-CoA thioesterase protein family, and is one of four acyl-CoA hydrolase genes located in a cluster on chromosome 14. Alternative splicing results in multiple transcript variants. [provided by RefSeq, Jan 2012],



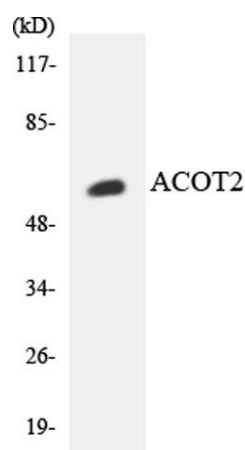
Western Blot analysis of VEC cells using ACOT2 Polyclonal Antibody diluted at 1:500



Immunohistochemical analysis of paraffin-embedded Human lung cancer. Antibody was diluted at 1:100(4° overnight). High-pressure and temperature Tris-EDTA,pH8.0 was used for antigen retrieval. Negative control (right) obtained from antibody was pre-absorbed by immunogen peptide.



Western blot analysis of lysates from Jurkat and HUVEC cells, using ACOT2 Antibody. The lane on the right is blocked with the synthesized peptide.



Western blot analysis of the lysates from HepG2 cells using ACOT2 antibody.