

## GPR75 rabbit pAb

**Cat#: orb767448 (Manual)**

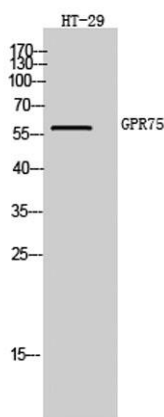
For research use only. Not intended for diagnostic use.

<b>Product Name</b>	GPR75 rabbit pAb
<b>Host species</b>	Rabbit
<b>Applications</b>	WB;IF;ELISA
<b>Species Cross-Reactivity</b>	Human;Mouse
<b>Recommended dilutions</b>	Western Blot: 1/500 - 1/2000. Immunofluorescence: 1/200 - 1/1000. ELISA: 1/5000. Not yet tested in other applications.
<b>Immunogen</b>	The antiserum was produced against synthesized peptide derived from human GPR75. AA range:381-430
<b>Specificity</b>	GPR75 Polyclonal Antibody detects endogenous levels of GPR75 protein.
<b>Formulation</b>	Liquid in PBS containing 50% glycerol, 0.5% BSA and 0.02% sodium azide..
<b>Storage</b>	Store at -20°C. Avoid repeated freeze-thaw cycles.
<b>Protein Name</b>	Probable G-protein coupled receptor 75
<b>Gene Name</b>	GPR75
<b>Cellular localization</b>	Cell membrane; Multi-pass membrane protein .
<b>Purification</b>	The antibody was affinity-purified from rabbit antiserum by affinity-chromatography using epitope-specific immunogen.
<b>Clonality</b>	Polyclonal

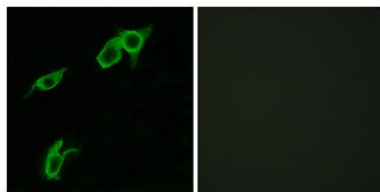
<b>Concentration</b>	1 mg/ml
<b>Observed band</b>	59kD
<b>Human Gene ID</b>	10936
<b>Human Swiss-Prot Number</b>	O95800
<b>Alternative Names</b>	GPR75; Probable G-protein coupled receptor 75

#### Background

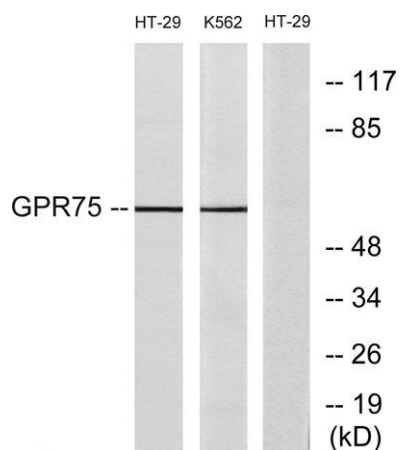
GPR75 is a member of the G protein-coupled receptor family. GPRs are cell surface receptors that activate guanine-nucleotide binding proteins upon the binding of a ligand.[supplied by OMIM, Jul 2002],



**Western Blot analysis of HT-29 cells using GPR75 Polyclonal Antibody**



**Immunofluorescence analysis of LOVO cells, using GPR75 Antibody. The picture on the right is blocked with the synthesized peptide.**



Western blot analysis of lysates from HT-29 and K562 cells, using GPR75 Antibody. The lane on the right is blocked with the synthesized peptide.