

WAVE3 rabbit pAb**Cat#: orb767433 (Manual)**

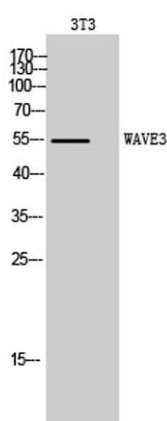
For research use only. Not intended for diagnostic use.

Product Name	WAVE3 rabbit pAb
Host species	Rabbit
Applications	WB;IHC;IF;ELISA
Species Cross-Reactivity	Human;Mouse
Recommended dilutions	Western Blot: 1/500 - 1/2000. Immunohistochemistry: 1/100 - 1/300. ELISA: 1/10000. Not yet tested in other applications.
Immunogen	The antiserum was produced against synthesized peptide derived from human WASF3. AA range:151-200
Specificity	WAVE3 Polyclonal Antibody detects endogenous levels of WAVE3 protein.
Formulation	Liquid in PBS containing 50% glycerol, 0.5% BSA and 0.02% sodium azide..
Storage	Store at -20°C. Avoid repeated freeze-thaw cycles.
Protein Name	Wiskott-Aldrich syndrome protein family member 3
Gene Name	WASF3
Cellular localization	Cytoplasm, cytoskeleton.
Purification	The antibody was affinity-purified from rabbit antiserum by affinity-chromatography using epitope-specific immunogen.
Clonality	Polyclonal

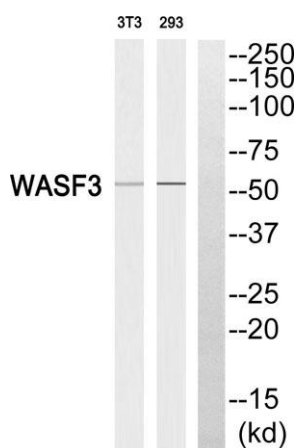
Concentration	1 mg/ml
Observed band	55kD
Human Gene ID	10810
Human Swiss-Prot Number	Q9UPY6
Alternative Names	WASF3; KIAA0900; SCAR3; WAVE3; Wiskott-Aldrich syndrome protein family member 3; WASP family protein member 3; Protein WAVE-3; Verprolin homology domain-containing protein 3

Background

This gene encodes a member of the Wiskott-Aldrich syndrome protein family. The gene product is a protein that forms a multiprotein complex that links receptor kinases and actin. Binding to actin occurs through a C-terminal verprolin homology domain in all family members. The multiprotein complex serves to transduce signals that involve changes in cell shape, motility or function. A pseudogene of this gene have been defined on chromosome 6. Alternative splicing results in multiple transcript variants [provided by RefSeq, May 2014],



Western Blot analysis of 3T3 cells using WAVE3 Polyclonal Antibody. Secondary antibody(catalog#:RS0002) was diluted at 1:20000



Western blot analysis of WASF3 Antibody. The lane on the right is blocked with the WASF3 peptide.



Explore. Bioreagents.

www.biorbyt.com

Biorbyt Ltd
7 Signet Court, Swann Road, Cambridge, CB5 8LA. United Kingdom
Email: info@biorbyt.com | Phone: +44 (0)1223 859-353 | Fax: +44 (0)1223 280-240

Biorbyt LLC
68 TW Alexander Drive, Durham, NC 27709. United States
Email: info@biorbyt.com | Phone: +1 (415) 906-5211 | Fax: +1 (415) 651-8558