

ARPP-21 rabbit pAb**Cat#: orb767427 (Manual)**

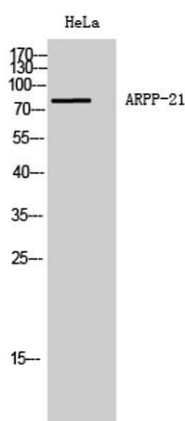
For research use only. Not intended for diagnostic use.

Product Name	ARPP-21 rabbit pAb
Host species	Rabbit
Applications	WB;IHC;IF;ELISA
Species Cross-Reactivity	Human;Mouse
Recommended dilutions	Western Blot: 1/500 - 1/2000. Immunohistochemistry: 1/100 - 1/300. ELISA: 1/5000. Not yet tested in other applications.
Immunogen	The antiserum was produced against synthesized peptide derived from human ARPP21. AA range:211-260
Specificity	ARPP-21 Polyclonal Antibody detects endogenous levels of ARPP-21 protein.
Formulation	Liquid in PBS containing 50% glycerol, 0.5% BSA and 0.02% sodium azide..
Storage	Store at -20°C. Avoid repeated freeze-thaw cycles.
Protein Name	cAMP-regulated phosphoprotein 21
Gene Name	ARPP21
Cellular localization	Cytoplasm .
Purification	The antibody was affinity-purified from rabbit antiserum by affinity-chromatography using epitope-specific immunogen.
Clonality	Polyclonal

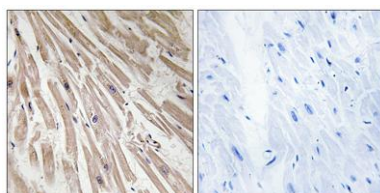
Concentration	1 mg/ml
Observed band	80kD
Human Gene ID	10777
Human Swiss-Prot Number	Q9UBL0
Alternative Names	ARPP21; TARPP; cAMP-regulated phosphoprotein 21; ARPP-21; Thymocyte cAMP-regulated phosphoprotein

Background

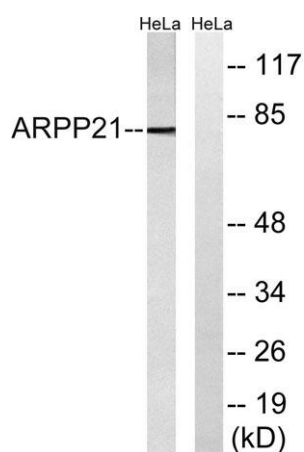
This gene encodes a cAMP-regulated phosphoprotein. The encoded protein is enriched in the caudate nucleus and cerebellar cortex. A similar protein in mouse may be involved in regulating the effects of dopamine in the basal ganglia. Alternate splicing results in multiple transcript variants. [provided by RefSeq, Jun 2012],



Western Blot analysis of HeLa cells using ARPP-21 Polyclonal Antibody diluted at 1:1000



Immunohistochemistry analysis of paraffin-embedded human heart tissue, using ARPP21 Antibody. The picture on the right is blocked with the synthesized peptide.



Western blot analysis of lysates from HeLa cells, using ARPP21 Antibody. The lane on the right is blocked with the synthesized peptide.