

## Six2 rabbit pAb

**Cat#: orb767422 (Manual)**

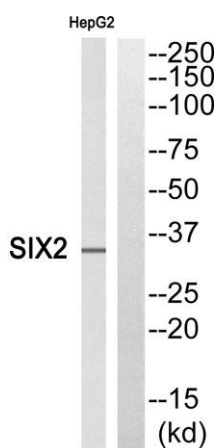
For research use only. Not intended for diagnostic use.

<b>Product Name</b>	Six2 rabbit pAb
<b>Host species</b>	Rabbit
<b>Applications</b>	WB;IHC
<b>Species Cross-Reactivity</b>	Human;Mouse
<b>Recommended dilutions</b>	WB 1:500-2000;IHC-p 1:50-300
<b>Immunogen</b>	Synthesized peptide derived from Six2 . at AA range: 30-110
<b>Specificity</b>	Six2 Polyclonal Antibody detects endogenous levels of Six2 protein.
<b>Formulation</b>	Liquid in PBS containing 50% glycerol, 0.5% BSA and 0.02% sodium azide..
<b>Storage</b>	Store at -20°C. Avoid repeated freeze-thaw cycles.
<b>Protein Name</b>	Homeobox protein SIX2
<b>Gene Name</b>	SIX2
<b>Cellular localization</b>	Nucleus .
<b>Purification</b>	The antibody was affinity-purified from rabbit antiserum by affinity-chromatography using epitope-specific immunogen.
<b>Clonality</b>	Polyclonal

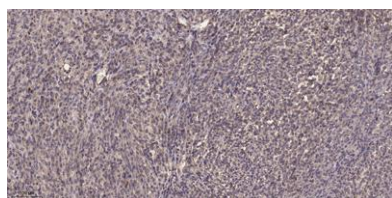
<b>Concentration</b>	1 mg/ml
<b>Observed band</b>	
<b>Human Gene ID</b>	10736
<b>Human Swiss-Prot Number</b>	Q9NPC8
<b>Alternative Names</b>	SIX2; Homeobox protein SIX2; Sine oculis homeobox homolog 2

#### Background

This gene is a member of the vertebrate gene family which encode proteins homologous to the Drosophila 'sine oculis' homeobox protein. The encoded protein is a transcription factor which, like other members of this gene family, may be involved in limb or eye development. [provided by RefSeq, Dec 2008],



**Western blot analysis of SIX2 Antibody. The lane on the right is blocked with the SIX2 peptide.**



**Immunohistochemical analysis of paraffin-embedded human Colon cancer. 1, Antibody was diluted at 1:200(4° overnight). 2, Tris-EDTA,pH9.0 was used for antigen retrieval. 3,Secondary antibody was diluted at 1:200(room temperature, 45min).**