

DNA pol δ 3 rabbit pAb**Cat#: orb767412 (Manual)**

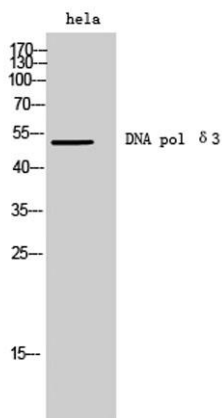
For research use only. Not intended for diagnostic use.

Product Name	DNA pol δ 3 rabbit pAb
Host species	Rabbit
Applications	WB;ELISA
Species Cross-Reactivity	Human;Mouse;Rat
Recommended dilutions	Western Blot: 1/500 - 1/2000. ELISA: 1/20000. Not yet tested in other applications.
Immunogen	The antiserum was produced against synthesized peptide derived from human POLD3. AA range:411-460
Specificity	DNA pol δ 3 Polyclonal Antibody detects endogenous levels of DNA pol δ 3 protein.
Formulation	Liquid in PBS containing 50% glycerol, 0.5% BSA and 0.02% sodium azide..
Storage	Store at -20°C. Avoid repeated freeze-thaw cycles.
Protein Name	DNA polymerase delta subunit 3
Gene Name	POLD3
Cellular localization	Cytoplasm . Nucleus . Partially colocalizes with PCNA and POLD1 at S phase replication sites (PubMed:11595739). Recruited to DNA damage sites within 2 hours following UV irradiation (PubMed:20227374, PubMed:22801543). .
Purification	The antibody was affinity-purified from rabbit antiserum by affinity-chromatography using epitope-specific immunogen.

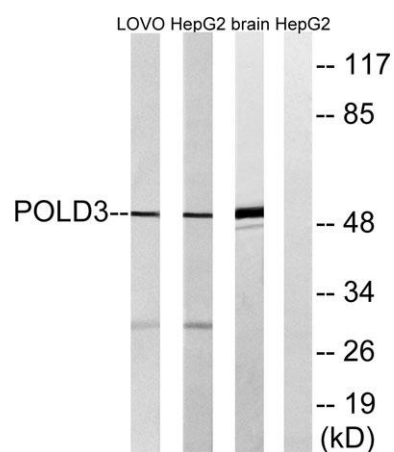
Clonality	Polyclonal
Concentration	1 mg/ml
Observed band	51kD
Human Gene ID	10714
Human Swiss-Prot Number	Q15054
Alternative Names	POLD3; KIAA0039; DNA polymerase delta subunit 3; DNA polymerase delta subunit p66

Background

This gene encodes the 66-kDa subunit of DNA polymerase delta. DNA polymerase delta possesses both polymerase and 3' to 5' exonuclease activity and plays a critical role in DNA replication and repair. The encoded protein plays a role in regulating the activity of DNA polymerase delta through interactions with other subunits and the processivity cofactor proliferating cell nuclear antigen (PCNA). Alternatively spliced transcript variants have been observed for this gene. [provided by RefSeq, Mar 2012],



Western Blot analysis of hela cells using DNA pol δ3 Polyclonal Antibody diluted at 1:500 cells nucleus extracted by Minute TM Cytoplasmic and Nuclear Fractionation kit (SC-003, Invent biotech, MN, USA).



Western blot analysis of lysates from LOVO, HepG2, and mouse brain cells, using POLD3 Antibody. The lane on the right is blocked with the synthesized peptide.