

**CGREF1 rabbit pAb****Cat#: orb767408 (Manual)**

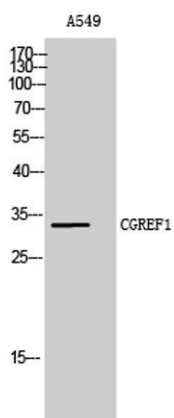
For research use only. Not intended for diagnostic use.

<b>Product Name</b>	CGREF1 rabbit pAb
<b>Host species</b>	Rabbit
<b>Applications</b>	WB;IHC;IF;ELISA
<b>Species Cross-Reactivity</b>	Human;Rat;Mouse;
<b>Recommended dilutions</b>	Western Blot: 1/500 - 1/2000. Immunohistochemistry: 1/100 - 1/300. ELISA: 1/40000. Not yet tested in other applications.
<b>Immunogen</b>	The antiserum was produced against synthesized peptide derived from human CGREF1. AA range:241-290
<b>Specificity</b>	CGREF1 Polyclonal Antibody detects endogenous levels of CGREF1 protein.
<b>Formulation</b>	Liquid in PBS containing 50% glycerol, 0.5% BSA and 0.02% sodium azide..
<b>Storage</b>	Store at -20°C. Avoid repeated freeze-thaw cycles.
<b>Protein Name</b>	Cell growth regulator with EF hand domain protein 1
<b>Gene Name</b>	CGREF1
<b>Cellular localization</b>	Secreted .
<b>Purification</b>	The antibody was affinity-purified from rabbit antiserum by affinity-chromatography using epitope-specific immunogen.
<b>Clonality</b>	Polyclonal

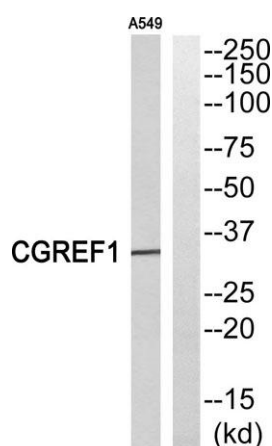
<b>Concentration</b>	1 mg/ml
<b>Observed band</b>	31kD
<b>Human Gene ID</b>	10669
<b>Human Swiss-Prot Number</b>	Q99674
<b>Alternative Names</b>	CGREF1; CGR11; Cell growth regulator with EF hand domain protein 1; Cell growth regulatory gene 11 protein; Hydrophobestin

### Background

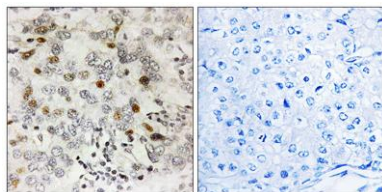
caution:The sequence shown here is derived from an Ensembl automatic analysis pipeline and should be considered as preliminary data.,function:Able to inhibit growth in several cell lines.,induction:By p53.,similarity:Contains 2 EF-hand domains.,



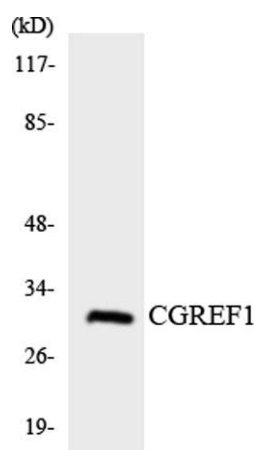
Western Blot analysis of A549 cells using CGREF1 Polyclonal Antibody



Western blot analysis of CGREF1 Antibody. The lane on the right is blocked with the CGREF1 peptide.



**Immunohistochemistry analysis of paraffin-embedded human breast carcinoma, using CGREF1 Antibody. The lane on the right is blocked with the CGREF1 peptide.**



**Western blot analysis of the lysates from K562 cells using CGREF1 antibody.**