

IGF2-BP2 rabbit pAb**Cat#: orb767404 (Manual)**

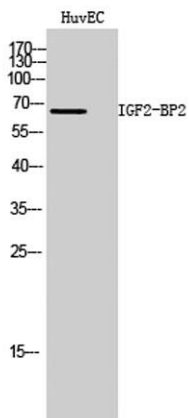
For research use only. Not intended for diagnostic use.

Product Name	IGF2-BP2 rabbit pAb
Host species	Rabbit
Applications	WB;ELISA
Species Cross-Reactivity	Human;Rat;Mouse;
Recommended dilutions	Western Blot: 1/500 - 1/2000. ELISA: 1/20000. Not yet tested in other applications.
Immunogen	The antiserum was produced against synthesized peptide derived from human IGF2BP2. AA range:141-190
Specificity	IGF2-BP2 Polyclonal Antibody detects endogenous levels of IGF2-BP2 protein.
Formulation	Liquid in PBS containing 50% glycerol, 0.5% BSA and 0.02% sodium azide..
Storage	Store at -20°C. Avoid repeated freeze-thaw cycles.
Protein Name	Insulin-like growth factor 2 mRNA-binding protein 2
Gene Name	IGF2BP2
Cellular localization	Nucleus. Cytoplasm. Cytoplasm, P-body . Cytoplasm, Stress granule . Localized in cytoplasmic mRNP granules containing untranslated mRNAs. Localizes at the connecting piece and the tail of the spermatozoa. In response to cellular stress, such as oxidative
Purification	The antibody was affinity-purified from rabbit antiserum by affinity-chromatography using epitope-specific immunogen.

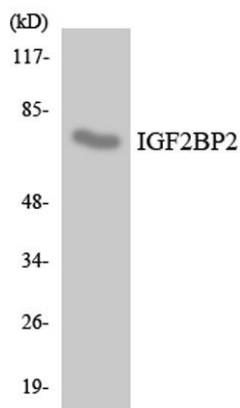
Clonality	Polyclonal
Concentration	1 mg/ml
Observed band	65kD
Human Gene ID	10644
Human Swiss-Prot Number	Q9Y6M1
Alternative Names	IGF2BP2; IMP2; VICKZ2; Insulin-like growth factor 2 mRNA-binding protein 2; IGF2 mRNA-binding protein 2; IMP-2; Hepatocellular carcinoma autoantigen p62; IGF-II mRNA-binding protein 2; VICKZ family member 2

Background

This gene encodes a protein that binds the 5' UTR of insulin-like growth factor 2 (IGF2) mRNA and regulates its translation. It plays an important role in metabolism and variation in this gene is associated with susceptibility to diabetes. Alternative splicing and promoter usage results in multiple transcript variants. Related pseudogenes are found on several chromosomes. [provided by RefSeq, Sep 2016],



Western Blot analysis of HuvEC cells using IGF2-BP2 Polyclonal Antibody



Western blot analysis of the lysates from Jurkat cells using IGF2BP2 antibody.



Explore. Bioreagents.

www.biorbyt.com