

POLR3C rabbit pAb**Cat#: orb767398 (Manual)**

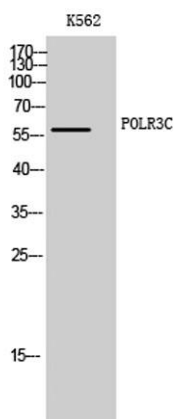
For research use only. Not intended for diagnostic use.

Product Name	POLR3C rabbit pAb
Host species	Rabbit
Applications	WB;ELISA;IHC
Species Cross-Reactivity	Human;Rat;Mouse;
Recommended dilutions	WB 1:500-2000;IHC-p 1:50-300; ELISA 2000-20000
Immunogen	The antiserum was produced against synthesized peptide derived from human RPC3. AA range:191-240
Specificity	POLR3C Polyclonal Antibody detects endogenous levels of POLR3C protein.
Formulation	Liquid in PBS containing 50% glycerol, 0.5% BSA and 0.02% sodium azide..
Storage	Store at -20°C. Avoid repeated freeze-thaw cycles.
Protein Name	DNA-directed RNA polymerase III subunit RPC3
Gene Name	POLR3C
Cellular localization	Nucleus .
Purification	The antibody was affinity-purified from rabbit antiserum by affinity-chromatography using epitope-specific immunogen.
Clonality	Polyclonal

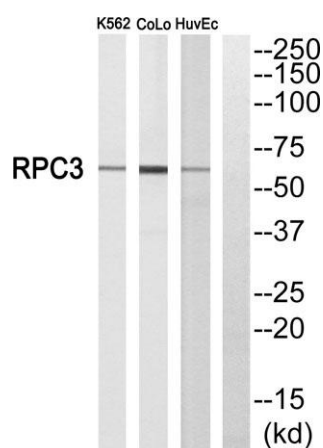
Concentration	1 mg/ml
Observed band	60kD
Human Gene ID	10623
Human Swiss-Prot Number	Q9BUI4
Alternative Names	POLR3C; DNA-directed RNA polymerase III subunit RPC3; RNA polymerase III subunit C3; DNA-directed RNA polymerase III subunit C; RNA polymerase III 62 kDa subunit; RPC62

Background

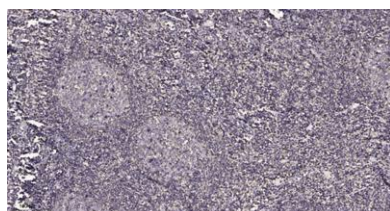
disease:Antibodies against POLR3C were found in the sera of patients with systemic sclerosis (SSc).,function:DNA-dependent RNA polymerase catalyzes the transcription of DNA into RNA using the four ribonucleoside triphosphates as substrates. Specific core component of RNA polymerase III which synthesizes small RNAs, such as 5S rRNA and tRNAs. May direct with other members of the subcomplex RNA Pol III binding to the TFIIB-DNA complex via the interactions between TFIIB and POLR3F. May be involved either in the recruitment and stabilization of the subcomplex within RNA polymerase III, or in stimulating catalytic functions of other subunits during initiation.,similarity:Belongs to the eukaryotic RPC3/POLR3C RNA polymerase subunit family.,subunit:Component of the RNA polymerase III (Pol III) complex consisting of 17 subunits (By similarity). RPC3/POLR3C, RPC6/POLR3F and RPC7/POLR3G form a Pol III subcomplex. Interacts with GTF3C4.,



Western Blot analysis of K562 cells using POLR3C Polyclonal Antibody cells nucleus extracted by Minute TM Cytoplasmic and Nuclear Fractionation kit (SC-003, Invent biotech, MN, USA).



Western blot analysis of RPC3 Antibody. The lane on the right is blocked with the RPC3 peptide.



Immunohistochemical analysis of paraffin-embedded human tonsil. 1, Antibody was diluted at 1:200(4° overnight). 2, Tris-EDTA,pH9.0 was used for antigen retrieval. 3,Secondary antibody was diluted at 1:200(room temperature, 45min).