

Cdc42EP3 rabbit pAb**Cat#: orb767391 (Manual)**

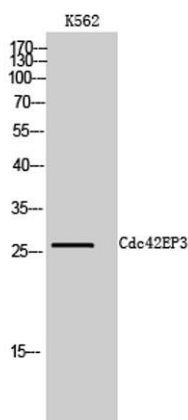
For research use only. Not intended for diagnostic use.

Product Name	Cdc42EP3 rabbit pAb
Host species	Rabbit
Applications	WB;ELISA
Species Cross-Reactivity	Human;Mouse;Rat
Recommended dilutions	Western Blot: 1/500 - 1/2000. ELISA: 1/40000. Not yet tested in other applications.
Immunogen	Synthesized peptide derived from the N-terminal region of human Cdc42EP3.
Specificity	Cdc42EP3 Polyclonal Antibody detects endogenous levels of Cdc42EP3 protein.
Formulation	Liquid in PBS containing 50% glycerol, 0.5% BSA and 0.02% sodium azide..
Storage	Store at -20°C. Avoid repeated freeze-thaw cycles.
Protein Name	Cdc42 effector protein 3
Gene Name	CDC42EP3
Cellular localization	Endomembrane system ; Peripheral membrane protein . Cytoplasm, cytoskeleton .
Purification	The antibody was affinity-purified from rabbit antiserum by affinity-chromatography using epitope-specific immunogen.
Clonality	Polyclonal

Concentration	1 mg/ml
Observed band	26kD
Human Gene ID	10602
Human Swiss-Prot Number	Q9UKI2
Alternative Names	CDC42EP3; BORG2; CEP3; Cdc42 effector protein 3; Binder of Rho GTPases 2; MSE55-related Cdc42-binding protein

Background

This gene encodes a member of a small family of guanosine triphosphate (GTP) metabolizing proteins that contain a CRIB (Cdc42, Rac interactive binding) domain. Members of this family of proteins act as effectors of CDC42 function. The encoded protein is involved in actin cytoskeleton reorganization during cell shape changes, including pseudopodia formation. A pseudogene of this gene is found on chromosome 19. Alternative splicing results in multiple transcript variants. [provided by RefSeq, Jul 2012],



Western Blot analysis of K562 cells using Cdc42EP3 Polyclonal Antibody