

OATP-C rabbit pAb**Cat#: orb767389 (Manual)**

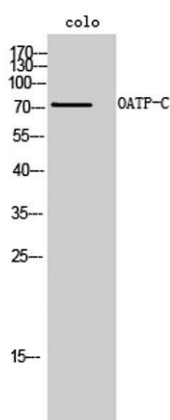
For research use only. Not intended for diagnostic use.

Product Name	OATP-C rabbit pAb
Host species	Rabbit
Applications	WB;ELISA
Species Cross-Reactivity	Human;Rat;Mouse;
Recommended dilutions	Western Blot: 1/500 - 1/2000. ELISA: 1/40000. Not yet tested in other applications.
Immunogen	The antiserum was produced against synthesized peptide derived from human SLCO1B1. AA range:251-300
Specificity	OATP-C Polyclonal Antibody detects endogenous levels of OATP-C protein.
Formulation	Liquid in PBS containing 50% glycerol, 0.5% BSA and 0.02% sodium azide..
Storage	Store at -20°C. Avoid repeated freeze-thaw cycles.
Protein Name	Solute carrier organic anion transporter family member 1B1
Gene Name	SLCO1B1
Cellular localization	Basolateral cell membrane ; Multi-pass membrane protein . Detected in basolateral membranes of hepatocytes.
Purification	The antibody was affinity-purified from rabbit antiserum by affinity-chromatography using epitope-specific immunogen.
Clonality	Polyclonal

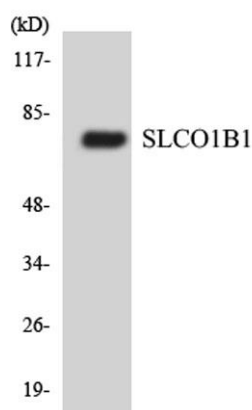
Concentration	1 mg/ml
Observed band	76kD
Human Gene ID	10599
Human Swiss-Prot Number	Q9Y6L6
Alternative Names	SLCO1B1; LST1; OATP1B1; OATP2; OATPC; SLC21A6; Solute carrier organic anion transporter family member 1B1; Liver-specific organic anion transporter 1; LST-1; OATP-C; Sodium-independent organic anion-transporting polypeptide 2; OATP-2; Solut

Background

This gene encodes a liver-specific member of the organic anion transporter family. The encoded protein is a transmembrane receptor that mediates the sodium-independent uptake of numerous endogenous compounds including bilirubin, 17-beta-glucuronosyl estradiol and leukotriene C4. This protein is also involved in the removal of drug compounds such as statins, bromosulphophthalein and rifampin from the blood into the hepatocytes. Polymorphisms in the gene encoding this protein are associated with impaired transporter function. [provided by RefSeq, Mar 2009],



Western Blot analysis of colo cells using OATP-C Polyclonal Antibody



Western blot analysis of the lysates from HUVEC cells using SLCO1B1 antibody.



Explore. Bioreagents.

www.biorbyt.com

Biorbyt Ltd
7 Signet Court, Swann Road, Cambridge, CB5 8LA. United Kingdom
Email: info@biorbyt.com | Phone: +44 (0)1223 859-353 | Fax: +44 (0)1223 280-240

Biorbyt LLC
68 TW Alexander Drive, Durham, NC 27709. United States
Email: info@biorbyt.com | Phone: +1 (415) 906-5211 | Fax: +1 (415) 651-8558