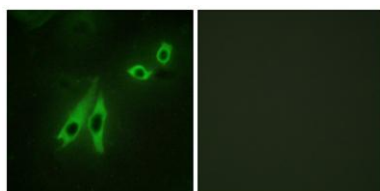


AKAP 110 rabbit pAb**Cat#: orb767381 (Manual)**

For research use only. Not intended for diagnostic use.

Product Name	AKAP 110 rabbit pAb
Host species	Rabbit
Applications	IF;ELISA
Species Cross-Reactivity	Human;Mouse
Recommended dilutions	Immunofluorescence: 1/200 - 1/1000. ELISA: 1/10000. Not yet tested in other applications.
Immunogen	The antiserum was produced against synthesized peptide derived from human AKAP3. AA range:191-240
Specificity	AKAP 110 Polyclonal Antibody detects endogenous levels of AKAP 110 protein.
Formulation	Liquid in PBS containing 50% glycerol, 0.5% BSA and 0.02% sodium azide..
Storage	Store at -20°C. Avoid repeated freeze-thaw cycles.
Protein Name	A-kinase anchor protein 3
Gene Name	AKAP3
Cellular localization	Cytoplasmic vesicle, secretory vesicle, acrosome . Ribs of the fibrous sheath in the principal piece of the sperm tail. Dorsal margin of the acrosomal segment.
Purification	The antibody was affinity-purified from rabbit antiserum by affinity-chromatography using epitope-specific immunogen.

Clonality	Polyclonal
Concentration	1 mg/ml
Observed band	
Human Gene ID	10566
Human Swiss-Prot Number	O75969
Alternative Names	AKAP3; AKAP110; SOB1; A-kinase anchor protein 3; AKAP-3; A-kinase anchor protein 110 kDa; AKAP 110; Cancer/testis antigen 82; CT82; Fibrous sheath protein of 95 kDa; FSP95; Fibrousheathin I; Fibrousheathin-1; Protein kinase A-anchoring prot
Background	This gene encodes a member of A-kinase anchoring proteins (AKAPs), a family of functionally related proteins that target protein kinase A to discrete locations within the cell. The encoded protein is reported to participate in protein-protein interactions with the R-subunit of the protein kinase A as well as sperm-associated proteins. This protein is expressed in spermatozoa and localized to the acrosomal region of the sperm head as well as the length of the principal piece. It may function as a regulator of motility, capacitation, and the acrosome reaction. [provided by RefSeq, May 2013],



Immunofluorescence analysis of NIH/3T3 cells, using AKAP3 Antibody. The picture on the right is blocked with the synthesized peptide.