

SEMA3C rabbit pAb**Cat#: orb767367 (Manual)**

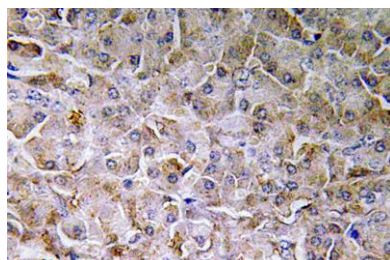
For research use only. Not intended for diagnostic use.

Product Name	SEMA3C rabbit pAb
Host species	Rabbit
Applications	WB;IHC;IF;ELISA
Species Cross-Reactivity	Human;Mouse;Rat
Recommended dilutions	Immunohistochemistry: 1/100 - 1/300. ELISA: 1/40000. Not yet tested in other applications.
Immunogen	The antiserum was produced against synthesized peptide derived from human SEMA3C. AA range:701-750
Specificity	SEMA3C Polyclonal Antibody detects endogenous levels of SEMA3C protein.
Formulation	Liquid in PBS containing 50% glycerol, 0.5% BSA and 0.02% sodium azide..
Storage	Store at -20°C. Avoid repeated freeze-thaw cycles.
Protein Name	Semaphorin-3C
Gene Name	SEMA3C
Cellular localization	Secreted.
Purification	The antibody was affinity-purified from rabbit antiserum by affinity-chromatography using epitope-specific immunogen.
Clonality	Polyclonal

Concentration	1 mg/ml
Observed band	
Human Gene ID	10512
Human Swiss-Prot Number	Q99985
Alternative Names	SEMA3C; SEMAE; Semaphorin-3C; Semaphorin-E; Sema E

Background

function:May be involved in diverse cell survival mechanisms.,similarity:Belongs to the semaphorin family.,similarity:Contains 1 Ig-like C2-type (immunoglobulin-like) domain.,similarity:Contains 1 PSI domain.,similarity:Contains 1 Sema domain.,tissue specificity:Expressed intensely in the heart, skeletal muscle, colon, small intestine, ovary, testis, and prostate. Faint expression ubiquitously among other organs, including brain.,



Immunohistochemistry analysis of SEMA3C antibody in paraffin-embedded human pancreas tissue.