

**RNF15 rabbit pAb****Cat#: orb767356 (Manual)**

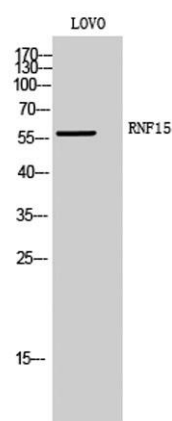
For research use only. Not intended for diagnostic use.

<b>Product Name</b>	RNF15 rabbit pAb
<b>Host species</b>	Rabbit
<b>Applications</b>	WB;IHC
<b>Species Cross-Reactivity</b>	Human;Mouse
<b>Recommended dilutions</b>	WB 1:500-2000;IHC-p 1:50-300
<b>Immunogen</b>	The antiserum was produced against synthesized peptide derived from human TRIM38. AA range:161-210
<b>Specificity</b>	RNF15 Polyclonal Antibody detects endogenous levels of RNF15 protein.
<b>Formulation</b>	Liquid in PBS containing 50% glycerol, 0.5% BSA and 0.02% sodium azide..
<b>Storage</b>	Store at -20°C. Avoid repeated freeze-thaw cycles.
<b>Protein Name</b>	Tripartite motif-containing protein 38
<b>Gene Name</b>	TRIM38
<b>Cellular localization</b>	Cytoplasm .
<b>Purification</b>	The antibody was affinity-purified from rabbit antiserum by affinity-chromatography using epitope-specific immunogen.
<b>Clonality</b>	Polyclonal

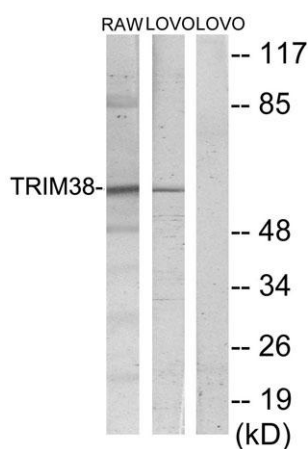
<b>Concentration</b>	1 mg/ml
<b>Observed band</b>	58kD
<b>Human Gene ID</b>	10475
<b>Human Swiss-Prot Number</b>	O00635
<b>Alternative Names</b>	TRIM38; RNF15; RORET; Tripartite motif-containing protein 38; RING finger protein 15; Zinc finger protein RoRet

### Background

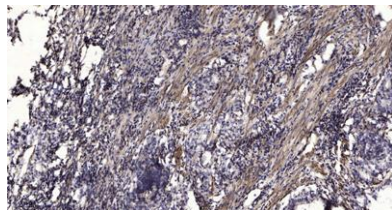
This gene encodes a member of the tripartite motif (TRIM) family. The encoded protein contains a RING-type zinc finger, B box-type zinc finger and SPRY domain. The function of this protein has not been identified. A pseudogene of this gene is located on the long arm of chromosome 4. [provided by RefSeq, Jul 2012],



**Western Blot analysis of LOVO cells using RNF15 Polyclonal Antibody**



**Western blot analysis of lysates from LOVO and RAW264.7 cells, using TRIM38 Antibody. The lane on the right is blocked with the synthesized peptide.**



**Immunohistochemical analysis of paraffin-embedded human Gastric adenocarcinoma. 1, Antibody was diluted at 1:200(4° overnight). 2, Tris-EDTA,pH9.0 was used for antigen retrieval. 3,Secondary antibody was diluted at 1:200(room temperature, 45min).**