

ZnT-9 rabbit pAb**Cat#: orb767354 (Manual)**

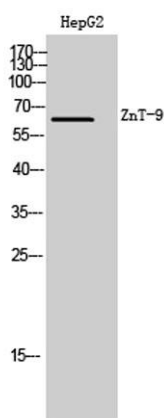
For research use only. Not intended for diagnostic use.

Product Name	ZnT-9 rabbit pAb
Host species	Rabbit
Applications	WB;ELISA
Species Cross-Reactivity	Human;Mouse;Rat
Recommended dilutions	Western Blot: 1/500 - 1/2000. ELISA: 1/20000. Not yet tested in other applications.
Immunogen	The antiserum was produced against synthesized peptide derived from human SLC30A9. AA range:181-230
Specificity	ZnT-9 Polyclonal Antibody detects endogenous levels of ZnT-9 protein.
Formulation	Liquid in PBS containing 50% glycerol, 0.5% BSA and 0.02% sodium azide..
Storage	Store at -20°C. Avoid repeated freeze-thaw cycles.
Protein Name	Zinc transporter 9
Gene Name	SLC30A9
Cellular localization	Membrane ; Multi-pass membrane protein . Nucleus . Cytoplasm . Cytoplasmic vesicle . Endoplasmic reticulum . Mainly in the cytoplasm (PubMed:10409434). Partial co-localization with endoplasmic reticulum (PubMed:28334855). .
Purification	The antibody was affinity-purified from rabbit antiserum by affinity-chromatography using epitope-specific immunogen.

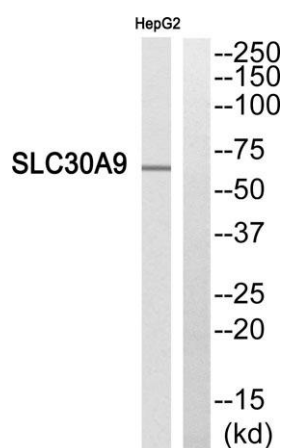
Clonality	Polyclonal
Concentration	1 mg/ml
Observed band	63kD
Human Gene ID	10463
Human Swiss-Prot Number	Q6PML9
Alternative Names	SLC30A9; C4orf1; HUEL; Zinc transporter 9; ZnT-9; Human embryonic lung protein; HuEL; Solute carrier family 30 member 9

Background

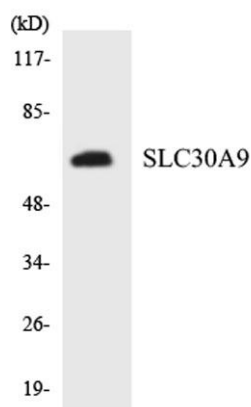
function:Plays a role in the p160 coactivator signaling pathway that mediates transcriptional activation by nuclear receptors (By similarity). Plays a role in transcriptional activation of Wnt-responsive genes.,**similarity:**Belongs to the cation diffusion facilitator (CDF) transporter (TC 2.A.4) family. SLC30A subfamily.,**subunit:**Interacts with GRIP1, ESR1 and AR.,**tissue specificity:**Ubiquitously expressed in fetal and adult tissues and cancer cell lines.,



Western Blot analysis of HepG2 cells using ZnT-9 Polyclonal Antibody. Secondary antibody(catalog#:RS0002) was diluted at 1:20000



Western blot analysis of SLC30A9 Antibody. The lane on the right is blocked with the SLC30A9 peptide.



Western blot analysis of the lysates from K562 cells using SLC30A9 antibody.