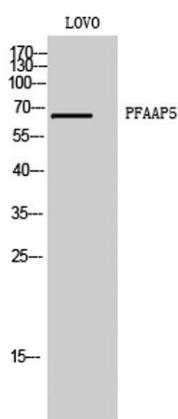


**PFAAP5 rabbit pAb****Cat#: orb767347 (Manual)**

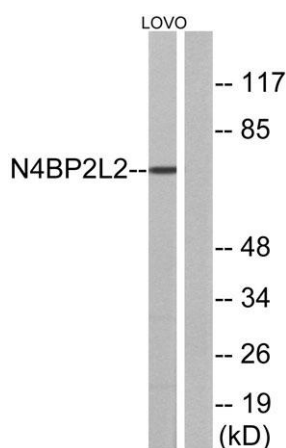
For research use only. Not intended for diagnostic use.

<b>Product Name</b>	PFAAP5 rabbit pAb
<b>Host species</b>	Rabbit
<b>Applications</b>	WB;ELISA;IHC
<b>Species Cross-Reactivity</b>	Human;Mouse
<b>Recommended dilutions</b>	WB 1:500-2000;IHC-p 1:50-300; ELISA 2000-20000
<b>Immunogen</b>	The antiserum was produced against synthesized peptide derived from human N4BP2L2. AA range:358-407
<b>Specificity</b>	PFAAP5 Polyclonal Antibody detects endogenous levels of PFAAP5 protein.
<b>Formulation</b>	Liquid in PBS containing 50% glycerol, 0.5% BSA and 0.02% sodium azide..
<b>Storage</b>	Store at -20°C. Avoid repeated freeze-thaw cycles.
<b>Protein Name</b>	NEDD4-binding protein 2-like 2
<b>Gene Name</b>	N4BP2L2
<b>Cellular localization</b>	nucleus,transcriptional repressor complex,extracellular exosome,
<b>Purification</b>	The antibody was affinity-purified from rabbit antiserum by affinity-chromatography using epitope-specific immunogen.
<b>Clonality</b>	Polyclonal

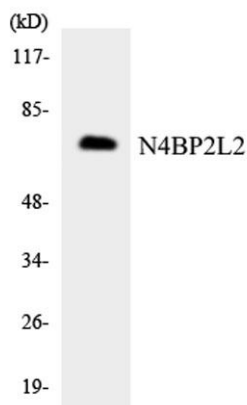
<b>Concentration</b>	1 mg/ml
<b>Observed band</b>	67kD
<b>Human Gene ID</b>	10443
<b>Human Swiss-Prot Number</b>	Q92802
<b>Alternative Names</b>	N4BP2L2; CG005; PFAAP5; NEDD4-binding protein 2-like 2; Phosphonoformate immuno-associated protein 5
<b>Background</b>	PTM:Phosphorylated upon DNA damage, probably by ATM or ATR.,



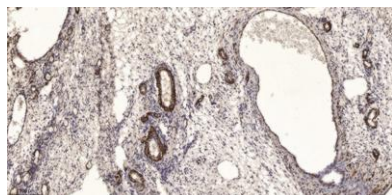
**Western Blot analysis of LOVO cells using PFAAP5 Polyclonal Antibody**



**Western blot analysis of lysates from LOVO cells, using N4BP2L2 Antibody. The lane on the right is blocked with the synthesized peptide.**



Western blot analysis of the lysates from K562 cells using N4BP2L2 antibody.



Immunohistochemical analysis of paraffin-embedded human oophoroma. 1, Antibody was diluted at 1:200(4° overnight). 2, Tris-EDTA,pH9.0 was used for antigen retrieval. 3,Secondary antibody was diluted at 1:200(room temperature, 45min).