

Cdc42EP2 rabbit pAb**Cat#: orb767346 (Manual)**

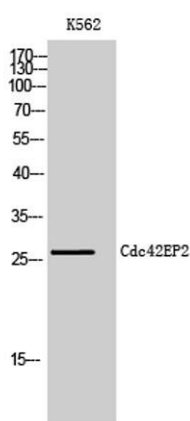
For research use only. Not intended for diagnostic use.

Product Name	Cdc42EP2 rabbit pAb
Host species	Rabbit
Applications	WB;IHC;IF;ELISA
Species Cross-Reactivity	Human;Mouse;Rat
Recommended dilutions	Western Blot: 1/500 - 1/2000. Immunohistochemistry: 1/100 - 1/300. ELISA: 1/40000. Not yet tested in other applications.
Immunogen	The antiserum was produced against synthesized peptide derived from human BORG1. AA range:10-59
Specificity	Cdc42EP2 Polyclonal Antibody detects endogenous levels of Cdc42EP2 protein.
Formulation	Liquid in PBS containing 50% glycerol, 0.5% BSA and 0.02% sodium azide..
Storage	Store at -20°C. Avoid repeated freeze-thaw cycles.
Protein Name	Cdc42 effector protein 2
Gene Name	CDC42EP2
Cellular localization	Endomembrane system ; Peripheral membrane protein . Cytoplasm, cytoskeleton .
Purification	The antibody was affinity-purified from rabbit antiserum by affinity-chromatography using epitope-specific immunogen.
Clonality	Polyclonal

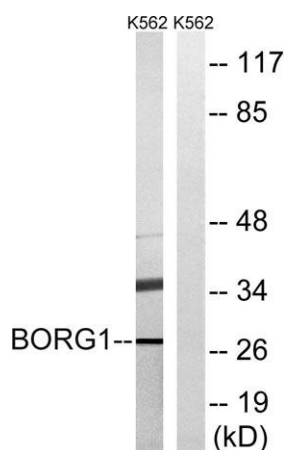
Concentration	1 mg/ml
Observed band	28kD
Human Gene ID	10435
Human Swiss-Prot Number	O14613
Alternative Names	CDC42EP2; BORG1; CEP2; Cdc42 effector protein 2; Binder of Rho GTPases 1

Background

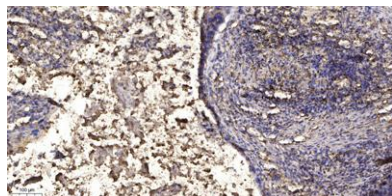
CDC42, a small Rho GTPase, regulates the formation of F-actin-containing structures through its interaction with the downstream effector proteins. The protein encoded by this gene is a member of the Borg family of CDC42 effector proteins. Borg family proteins contain a CRIB (Cdc42/Rac interactive-binding) domain. They bind to, and negatively regulate the function of CDC42. Coexpression of this protein with CDC42 suggested a role of this protein in actin filament assembly and cell shape control. [provided by RefSeq, Aug 2011],



Western Blot analysis of K562 cells using Cdc42EP2 Polyclonal Antibody



Western blot analysis of lysates from K562 cells, using BORG1 Antibody. The lane on the right is blocked with the synthesized peptide.



Immunohistochemical analysis of paraffin-embedded human Squamous cell carcinoma of lung. 1, Antibody was diluted at 1:200(4° overnight). 2, Tris-EDTA,pH9.0 was used for antigen retrieval. 3,Secondary antibody was diluted at 1:200(room temperature, 45min).