

DOC-1R rabbit pAb**Cat#: orb767322 (Manual)**

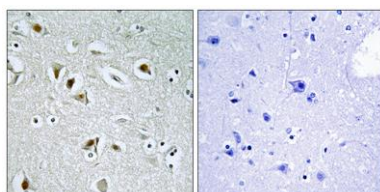
For research use only. Not intended for diagnostic use.

Product Name	DOC-1R rabbit pAb
Host species	Rabbit
Applications	IHC;IF;ELISA
Species Cross-Reactivity	Human;Mouse
Recommended dilutions	Immunohistochemistry: 1/100 - 1/300. ELISA: 1/5000. Not yet tested in other applications.
Immunogen	The antiserum was produced against synthesized peptide derived from human CDKA2. AA range:51-100
Specificity	DOC-1R Polyclonal Antibody detects endogenous levels of DOC-1R protein.
Formulation	Liquid in PBS containing 50% glycerol, 0.5% BSA and 0.02% sodium azide..
Storage	Store at -20°C. Avoid repeated freeze-thaw cycles.
Protein Name	Cyclin-dependent kinase 2-associated protein 2
Gene Name	CDK2AP2
Cellular localization	Cytoplasm . Nucleus . Accumulates in immature oocytes in the nucleus. During the first meiotic division, accumulates in the cytoplasm and localizes in dots in the vicinity of the chromosomes in a region enriched in microtubules. .
Purification	The antibody was affinity-purified from rabbit antiserum by affinity-chromatography using epitope-specific immunogen.

Clonality	Polyclonal
Concentration	1 mg/ml
Observed band	
Human Gene ID	10263
Human Swiss-Prot Number	O75956
Alternative Names	CDK2AP2; DOC1R; Cyclin-dependent kinase 2-associated protein 2; CDK2-associated protein 2; DOC-1-related protein; DOC-1R

Background

cyclin dependent kinase 2 associated protein 2(CDK2AP2) Homo sapiens
This gene encodes a protein that interacts with cyclin-dependent kinase 2 associated protein 1. Pseudogenes associated with this gene are located on chromosomes 7 and 9. Alternatively spliced transcript variants have been observed for this gene. [provided by RefSeq, Dec 2012],



Immunohistochemistry analysis of paraffin-embedded human brain tissue, using CDKA2 Antibody. The picture on the right is blocked with the synthesized peptide.