

Angptl7 rabbit pAb

Cat#: orb767316 (Manual)

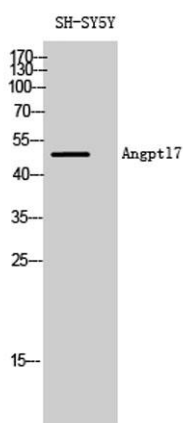
For research use only. Not intended for diagnostic use.

Product Name	Angptl7 rabbit pAb
Host species	Rabbit
Applications	WB;IHC;IF;ELISA
Species Cross-Reactivity	Human;Mouse
Recommended dilutions	Western Blot: 1/500 - 1/2000. Immunohistochemistry: 1/100 - 1/300. ELISA: 1/10000. Not yet tested in other applications.
Immunogen	The antiserum was produced against synthesized peptide derived from human ANGPTL7. AA range:297-346
Specificity	Angptl7 Polyclonal Antibody detects endogenous levels of Angptl7 protein.
Formulation	Liquid in PBS containing 50% glycerol, 0.5% BSA and 0.02% sodium azide..
Storage	Store at -20°C. Avoid repeated freeze-thaw cycles.
Protein Name	Angiopoietin-related protein 7
Gene Name	ANGPTL7
Cellular localization	Secreted .
Purification	The antibody was affinity-purified from rabbit antiserum by affinity-chromatography using epitope-specific immunogen.
Clonality	Polyclonal

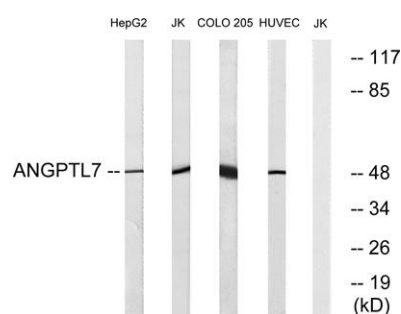
Concentration	1 mg/ml
Observed band	50kD
Human Gene ID	10218
Human Swiss-Prot Number	O43827
Alternative Names	ANGPTL7; CDT6; Angiopoietin-related protein 7; Angiopoietin-like factor; Angiopoietin-like protein 7; Cornea-derived transcript 6 protein

Background

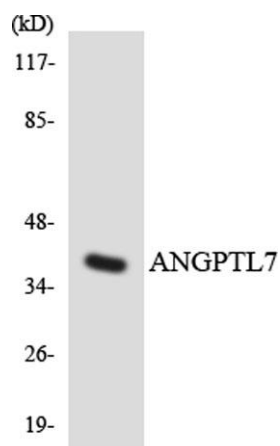
similarity:Contains 1 fibrinogen C-terminal domain.,tissue specificity:Highly and specifically expressed in the cornea where is confined to the stromal layer.,



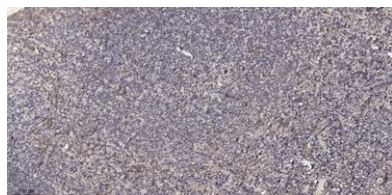
Western Blot analysis of SH-SY5Y cells using Angptl7 Polyclonal Antibody diluted at 1:2000



Western blot analysis of lysates from Jurkat, COLO, HUVEC, and HepG2 cells, using ANGPTL7 Antibody. The lane on the right is blocked with the synthesized peptide.



Western blot analysis of the lysates from HeLa cells using ANGPTL7 antibody.



Immunohistochemical analysis of paraffin-embedded human tonsil. 1, Antibody was diluted at 1:200(4° overnight). 2, Tris-EDTA,pH9.0 was used for antigen retrieval. 3,Secondary antibody was diluted at 1:200(room temperature, 30min).