

**WAVE2 rabbit pAb****Cat#: orb767306 (Manual)**

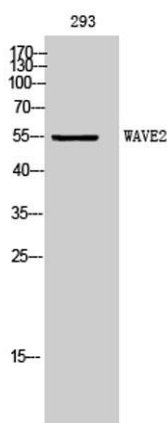
For research use only. Not intended for diagnostic use.

|                                 |  |
|---------------------------------|--|
| <b>Product Name</b>             | WAVE2 rabbit pAb   |
| <b>Host species</b>             | Rabbit   |
| <b>Applications</b>             | WB;IHC;IF;ELISA  |
| <b>Species Cross-Reactivity</b> | Human;Mouse;Rat  |
| <b>Recommended dilutions</b>    | Western Blot: 1/500 - 1/2000. Immunohistochemistry: 1/100 - 1/300. ELISA: 1/5000. Not yet tested in other applications.  |
| <b>Immunogen</b>                | The antiserum was produced against synthesized peptide derived from human WASF2. AA range:141-190  |
| <b>Specificity</b>              | WAVE2 Polyclonal Antibody detects endogenous levels of WAVE2 protein.  |
| <b>Formulation</b>              | Liquid in PBS containing 50% glycerol, 0.5% BSA and 0.02% sodium azide..   |
| <b>Storage</b>                  | Store at -20°C. Avoid repeated freeze-thaw cycles.   |
| <b>Protein Name</b>             | Wiskott-Aldrich syndrome protein family member 2   |
| <b>Gene Name</b>                | WASF2  |
| <b>Cellular localization</b>    | Cytoplasm, cytoskeleton . Cell projection, lamellipodium . Basolateral cell membrane . At the interface between the lamellipodial actin meshwork and the membrane. . |
| <b>Purification</b>             | The antibody was affinity-purified from rabbit antiserum by affinity-chromatography using epitope-specific immunogen.  |

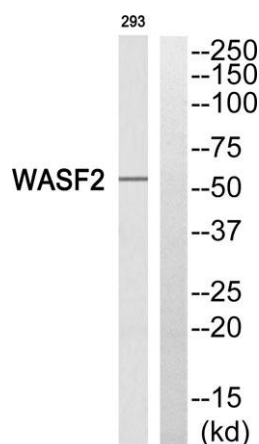
|                                |  |
|--------------------------------|--|
| <b>Clonality</b>               | Polyclonal   |
| <b>Concentration</b>           | 1 mg/ml  |
| <b>Observed band</b>           | 55kD   |
| <b>Human Gene ID</b>           | 10163  |
| <b>Human Swiss-Prot Number</b> | Q9Y6W5   |
| <b>Alternative Names</b>       | WASF2; WAVE2; Wiskott-Aldrich syndrome protein family member 2; WASP family protein member 2; Protein WAVE-2; Verprolin homology domain-containing protein 2 |

### Background

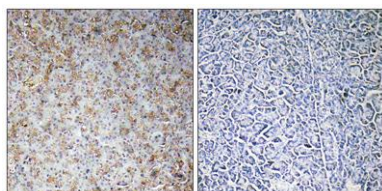
This gene encodes a member of the Wiskott-Aldrich syndrome protein family. The gene product is a protein that forms a multiprotein complex that links receptor kinases and actin. Binding to actin occurs through a C-terminal verprolin homology domain in all family members. The multiprotein complex serves to transduce signals that involve changes in cell shape, motility or function. The published map location (PMID:10381382) has been changed based on recent genomic sequence comparisons, which indicate that the expressed gene is located on chromosome 1, and a pseudogene may be located on chromosome X. Two transcript variants encoding different isoforms have been found for this gene. [provided by RefSeq, Jan 2011],



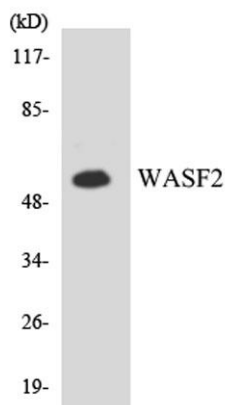
**Western Blot analysis of 293 cells using WAVE2 Polyclonal Antibody. Secondary antibody(catalog#:RS0002) was diluted at 1:20000**



Western blot analysis of WASF2 Antibody. The lane on the right is blocked with the WASF2 peptide.



Immunohistochemistry analysis of paraffin-embedded human pancreas, using WASF2 Antibody. The lane on the right is blocked with the WASF2 peptide.



Western blot analysis of the lysates from K562 cells using WASF2 antibody.