

Dynein LC 4 rabbit pAb

Cat#: orb767301 (Manual)

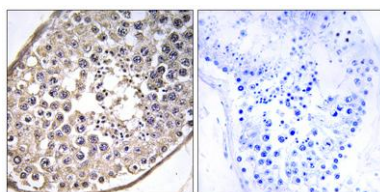
For research use only. Not intended for diagnostic use.

Product Name	Dynein LC 4 rabbit pAb
Host species	Rabbit
Applications	IHC;IF;ELISA
Species Cross-Reactivity	Human;Mouse
Recommended dilutions	Immunohistochemistry: 1/100 - 1/300. ELISA: 1/40000. Not yet tested in other applications.
Immunogen	The antiserum was produced against synthesized peptide derived from human DNAL4. AA range:1-50
Specificity	Dynein LC 4 Polyclonal Antibody detects endogenous levels of Dynein LC 4 protein.
Formulation	Liquid in PBS containing 50% glycerol, 0.5% BSA and 0.02% sodium azide..
Storage	Store at -20°C. Avoid repeated freeze-thaw cycles.
Protein Name	Dynein light chain 4 axonemal
Gene Name	DNAL4
Cellular localization	Cytoplasm, cytoskeleton, cilium axoneme .
Purification	The antibody was affinity-purified from rabbit antiserum by affinity-chromatography using epitope-specific immunogen.
Clonality	Polyclonal

Concentration	1 mg/ml
Observed band	
Human Gene ID	10126
Human Swiss-Prot Number	O96015
Alternative Names	DNAL4; Dynein light chain 4; axonemal

Background

This gene encodes an axonemal dynein light chain which functions as a component of the outer dynein arms complex. This complex acts as the molecular motor that provides the force to move cilia in an ATP-dependent manner. The encoded protein is expressed in tissues with motile cilia or flagella and may be involved in the movement of sperm flagella. [provided by RefSeq, Dec 2014],



Immunohistochemistry analysis of paraffin-embedded human testis tissue, using DNAL4 Antibody. The picture on the right is blocked with the synthesized peptide.