

**Connexin-45 rabbit pAb****Cat#: orb767292 (Manual)**

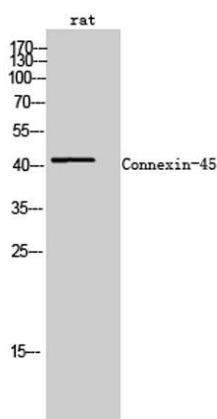
For research use only. Not intended for diagnostic use.

<b>Product Name</b>	Connexin-45 rabbit pAb
<b>Host species</b>	Rabbit
<b>Applications</b>	WB;IHC;IF;ELISA
<b>Species Cross-Reactivity</b>	Human;Mouse;Rat
<b>Recommended dilutions</b>	Western Blot: 1/500 - 1/2000. Immunohistochemistry: 1/100 - 1/300. ELISA: 1/40000. Not yet tested in other applications.
<b>Immunogen</b>	The antiserum was produced against synthesized peptide derived from human Connexin-45. AA range:312-361
<b>Specificity</b>	Connexin-45 Polyclonal Antibody detects endogenous levels of Connexin-45 protein.
<b>Formulation</b>	Liquid in PBS containing 50% glycerol, 0.5% BSA and 0.02% sodium azide..
<b>Storage</b>	Store at -20°C. Avoid repeated freeze-thaw cycles.
<b>Protein Name</b>	Gap junction gamma-1 protein
<b>Gene Name</b>	GJC1
<b>Cellular localization</b>	Cell membrane; Multi-pass membrane protein. Cell junction, gap junction.
<b>Purification</b>	The antibody was affinity-purified from rabbit antiserum by affinity-chromatography using epitope-specific immunogen.
<b>Clonality</b>	Polyclonal

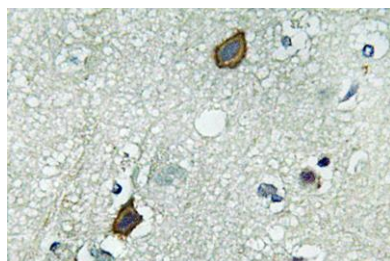
<b>Concentration</b>	1 mg/ml
<b>Observed band</b>	45kD
<b>Human Gene ID</b>	10052
<b>Human Swiss-Prot Number</b>	P36383
<b>Alternative Names</b>	GJC1; GJA7; Gap junction gamma-1 protein; Connexin-45; Cx45; Gap junction alpha-7 protein

### Background

This gene is a member of the connexin gene family. The encoded protein is a component of gap junctions, which are composed of arrays of intercellular channels that provide a route for the diffusion of low molecular weight materials from cell to cell. Alternatively spliced transcript variants encoding the same isoform have been described. [provided by RefSeq, Jul 2008],



**Western Blot analysis of rat cells using Connexin-45 Polyclonal Antibody**



**Immunohistochemistry analysis of Connexin-45 antibody in paraffin-embedded human brain tissue.**

