

Connexin 45 rabbit pAb

Cat#: orb767291 (Manual)

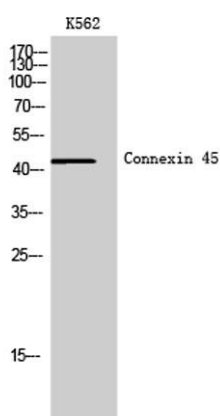
For research use only. Not intended for diagnostic use.

Product Name	Connexin 45 rabbit pAb
Host species	Rabbit
Applications	WB;ELISA
Species Cross-Reactivity	Human;Mouse;Rat
Recommended dilutions	Western Blot: 1/500 - 1/2000. ELISA: 1/40000. Not yet tested in other applications.
Immunogen	The antiserum was produced against synthesized peptide derived from human GJC1. AA range:231-280
Specificity	Connexin 45 Polyclonal Antibody detects endogenous levels of Connexin 45 protein.
Formulation	Liquid in PBS containing 50% glycerol, 0.5% BSA and 0.02% sodium azide..
Storage	Store at -20°C. Avoid repeated freeze-thaw cycles.
Protein Name	Gap junction gamma-1 protein
Gene Name	GJC1
Cellular localization	Cell membrane; Multi-pass membrane protein. Cell junction, gap junction.
Purification	The antibody was affinity-purified from rabbit antiserum by affinity-chromatography using epitope-specific immunogen.
Clonality	Polyclonal

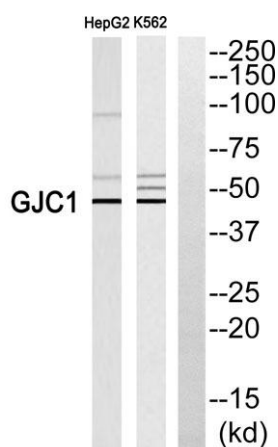
Concentration	1 mg/ml
Observed band	45kD
Human Gene ID	10052
Human Swiss-Prot Number	P36383
Alternative Names	GJC1; GJA7; Gap junction gamma-1 protein; Connexin-45; Cx45; Gap junction alpha-7 protein

Background

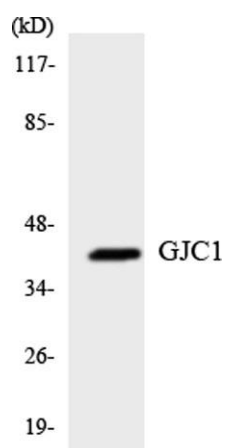
This gene is a member of the connexin gene family. The encoded protein is a component of gap junctions, which are composed of arrays of intercellular channels that provide a route for the diffusion of low molecular weight materials from cell to cell. Alternatively spliced transcript variants encoding the same isoform have been described. [provided by RefSeq, Jul 2008],



Western Blot analysis of K562 cells using Connexin 45 Polyclonal Antibody



Western blot analysis of GJC1 Antibody. The lane on the right is blocked with the GJC1 peptide.



Western blot analysis of the lysates from K562 cells using GJC1 antibody.