

TANK rabbit pAb

Cat#: orb767278 (Manual)

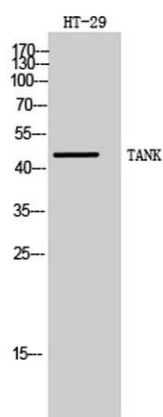
For research use only. Not intended for diagnostic use.

| | |
|---------------------------------|--|
| Product Name | TANK rabbit pAb |
| Host species | Rabbit |
| Applications | WB;IHC;IF;ELISA |
| Species Cross-Reactivity | Human;Mouse;Rat |
| Recommended dilutions | Western Blot: 1/500 - 1/2000. Immunohistochemistry: 1/100 - 1/300. Immunofluorescence: 1/200 - 1/1000. ELISA: 1/10000. Not yet tested in other applications. |
| Immunogen | The antiserum was produced against synthesized peptide derived from human TANK. AA range:171-220 |
| Specificity | TANK Polyclonal Antibody detects endogenous levels of TANK protein. |
| Formulation | Liquid in PBS containing 50% glycerol, 0.5% BSA and 0.02% sodium azide.. |
| Storage | Store at -20°C. Avoid repeated freeze-thaw cycles. |
| Protein Name | TRAF family member-associated NF-kappa-B activator |
| Gene Name | TANK |
| Cellular localization | Cytoplasm. |
| Purification | The antibody was affinity-purified from rabbit antiserum by affinity-chromatography using epitope-specific immunogen. |
| Clonality | Polyclonal |

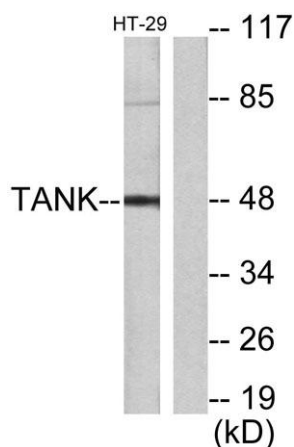
| | |
|--------------------------------|--|
| Concentration | 1 mg/ml |
| Observed band | 48kD |
| Human Gene ID | 10010 |
| Human Swiss-Prot Number | Q92844 |
| Alternative Names | TANK; ITRAF; TRAF2; TRAF family member-associated NF-kappa-B activator; TRAF-interacting protein; I-TRAF |

Background

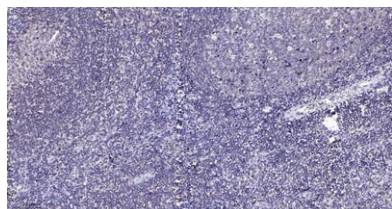
The TRAF (tumor necrosis factor receptor-associated factor) family of proteins associate with and transduce signals from members of the tumor necrosis factor receptor superfamily. The protein encoded by this gene is found in the cytoplasm and can bind to TRAF1, TRAF2, or TRAF3, thereby inhibiting TRAF function by sequestering the TRAFs in a latent state in the cytoplasm. For example, the protein encoded by this gene can block TRAF2 binding to LMP1, the Epstein-Barr virus transforming protein, and inhibit LMP1-mediated NF-kappa-B activation. Three alternatively spliced transcript variants encoding different isoforms have been found for this gene. [provided by RefSeq, Nov 2010],



Western Blot analysis of HT-29 cells using TANK Polyclonal Antibody



Western blot analysis of lysates from HT29 cells, using I-TRAF Antibody. The lane on the right is blocked with the synthesized peptide.



Immunohistochemical analysis of paraffin-embedded human tonsil. 1, Antibody was diluted at 1:200(4° overnight). 2, Tris-EDTA,pH9.0 was used for antigen retrieval. 3,Secondary antibody was diluted at 1:200(room temperature, 30min).