

Epigen rabbit pAb**Cat#: orb767256 (Manual)**

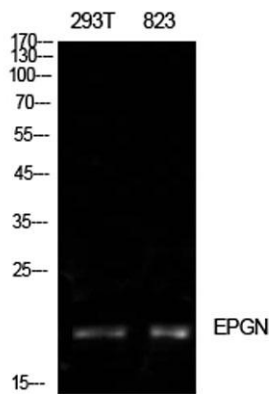
For research use only. Not intended for diagnostic use.

Product Name	Epigen rabbit pAb
Host species	Rabbit
Applications	WB;ELISA
Species Cross-Reactivity	Human;Rat;Mouse;
Recommended dilutions	Western Blot: 1/500 - 1/2000. ELISA: 1/10000. Not yet tested in other applications.
Immunogen	The antiserum was produced against synthesized peptide derived from the Internal region of human EPGN. AA range:11-60
Specificity	Epigen Polyclonal Antibody detects endogenous levels of Epigen protein.
Formulation	Liquid in PBS containing 50% glycerol, 0.5% BSA and 0.02% sodium azide..
Storage	Store at -20°C. Avoid repeated freeze-thaw cycles.
Protein Name	Epigen
Gene Name	EPGN
Cellular localization	[Isoform 1]: Membrane ; Single-pass type I membrane protein .; [Isoform 2]: Membrane ; Single-pass type I membrane protein .; [Isoform 3]: Secreted .; [Isoform 4]: Secreted .; [Isoform 5]: Secreted .; [Isoform 6]: Secreted .
Purification	The antibody was affinity-purified from rabbit antiserum by affinity-chromatography using epitope-specific immunogen.

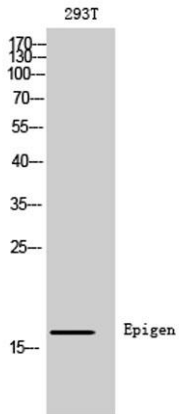
Clonality	Polyclonal
Concentration	1 mg/ml
Observed band	17kD
Human Gene ID	255324
Human Swiss-Prot Number	Q6UW88
Alternative Names	EPGN; Epigen; Epithelial mitogen; EPG

Background

The protein encoded by this gene is a member of the epidermal growth factor family. Members of this family are ligands for the epidermal growth factor receptor and play a role in cell survival, proliferation and migration. This protein has been reported to have high mitogenic activity but low affinity for its receptor. Expression of this transcript and protein have been reported in cancer specimens of the breast, bladder, and prostate. Alternative splicing results in multiple transcript variants. [provided by RefSeq, Aug 2012],



Western Blot analysis of 293T, 823 cells using Epigen Polyclonal Antibody. Antibody was diluted at 1:500. Secondary antibody(catalog#:RS0002) was diluted at 1:20000



Western Blot analysis of 293T cells using Epigen Polyclonal Antibody diluted at 1:500. Secondary antibody(catalog#:RS0002) was diluted at 1:20000